

OCTOBER 2014

WHOLE NUMBER 89

VOL. 22 NO. 4

THE PENNY POST

Official Journal Of The Carriers And Locals Society



The earliest recorded transatlantic cover with a Blood & Co. stamp of any type. The stamp is a Blood's 15L8 tied by a circular datestamp of July 27, 1847 on a folded letter to England. The receiving handstamp on the reverse is Liverpool, August 14, 1847.

INSIDE THIS ISSUE

BLOOD'S PART 8: 15L8

AN UNREPORTED EAGLE CITY POST HANDSTAMP

EAGLE CITY POST AND STAIT'S DESPATCH – AN UPDATE

NEW YORK DISPATCH POST

J.D. DOUGHTY

If you collect high quality U. S.



Now selling postal history

Go online at www.alanecohen.com to view this month's

Stamps and postal history listings in full color.

Want Lists graciously accepted with sensitivity to
your individual needs and concerns.

ALAN E. COHEN

P.O. Box 929 • Cathedral Station • New York, N.Y. 10025

Telephone: (212) 280-7865 • Fax: (212) 280-7864

Email: alanecohen@mindspring.com

ASDA, APS, Classics Society, CCNY, USSS, Carriers & Locals Society, APC

Serving collectors since 1974

THE PENNY POST

VOL. 22 NO. 4

OCTOBER 2014



The Carriers and Locals Society, Inc.
APS Affiliate 211

Official Journal Of The Carriers and Locals Society

Published quarterly in January, April, July and October.
Price per issue: \$10.00 for members, \$12.00 for non-members.

Website: www.pennypost.org

CONTENTS

Editor's Message.....	Pages 2-3
Auction Announcement	Page 4
Blood's Part 8: 15L8 by Vernon R. Morris, Jr., MD	Pages 5-45
New York Dispatch Post by Larry Lyons.....	Page 49
J.D. Doughty by Larry Lyons	Page 50
An Unreported Eagle City Post Handstamp by John D. Bowman.....	Page 51
Eagle City Post and Stait's Despatch – An Update by Larry Lyons.....	Pages 52-56

OFFICERS OF THE SOCIETY

President:.....	Clifford Alexander, 8721 Bluedale St., Alexandria, VA 22308 E-mail: clifford.alexander@klgates.com
First Vice President:.....	John Bowman, 14409 Pentridge Dr., Corpus Christi, TX 78410 E-mail: jb Bowman@stx.rr.com
Second Vice President:	Byron Sandfield, 6440 N. Central Exp., Suite 316, Dallas, TX 75206
Secretary / Treasurer:	Martin Richardson, P.O. Box 74, Grosse Ile, MI 48138 E-mail: MartinR362@aol.com
Auction Manager:	Alan Cohen, P.O. Box 929, New York, NY 10025 E-mail: alanecohen@mindspring.com

DIRECTORS

Cliff Alexander, Larry Ballantyne, Alan Cohen, Eric Karell, Larry Lyons, Vernon Morris,
Martin Richardson, William Sammis, David Snow, Gordon Stimmell

EDITORIAL BOARD

Editor-in-Chief.....	Larry Lyons, 7 Brightfield Lane, Westport, CT 06880
Assistant Editor	John Bowman, 14409 Pentridge Dr., Corpus Christi, TX 78410
Carriers.....	Scott R. Trepel, 60 East 56th St., New York, NY 10022-3219
Expresses.....	William Sammis, 436 Thomas Road, Ithaca, NY 14850
Fakes and Forgeries	Clifford Alexander, 8721 Bluedale St., Alexandria, VA 22308

Address changes should be sent to the Secretary, also back issue orders, other correspondence to the Editor-in-Chief. Reports of new items or articles should be submitted to the appropriate Section Editor or Editor-in-Chief. Do not send stamps or covers unless requested. Any items sent will be protected but no liability attaches to an editor or the Society.

Editor's Message

By
Larry Lyons

Greetings

Hi there fellow collectors. Hope you are adding interesting things to your collection and are enjoying the search, the research and the rewards of the research. We have received more accolades for our journal. At NAPEX we won a gold medal and the reserve grand award for literature! Judges continue to point to *The Penny Post* as the journal to emulate.

Build the Future of the C&LS

Please introduce one person to our field. Building a great C&LS starts with the addition of a single member. Spread the word. We are only a few short of 200 members. We have to gain more speed and go over this benchmark. Spread the word about the enjoyment and educational value of being a C&LS member. *The Penny Post* has won 24 gold medals in literature and six reserve grand awards since its inception in 1990. *The Penny Post* and its Editor have won the coveted Diane D. Bohreit Award for Excellence in Literature three times (1994, 2009 and 2011). Please support the C&LS by placing bids. It is one way to support our club. Here's another way...

Financial Contributions

I will consult with Marty Richardson, our Secretary to assemble our "Honors List". Contributing members give \$50 and sustaining members give \$51-\$500. Over \$500 and you are a patron member. The time is now for keeping this fine journal alive and at the top of the society publications. **We need your financial support.** Send your tax deductible donation to Marty Richardson now.

In This Issue

We are continuing the Blood's opus with Vernon Morris' Part 8 in his series of research articles. Part 8 deals with the 15L8 stamp. There is lots of original thinking here from the world's foremost expert on Blood's. Much thanks to Vern for his incredible in-depth study and for his continued energy on the Blood's series.

We also have a short article by John Bowman on an unreported Eagle City Post handstamp proving once again that new discoveries can be found in a field that is over 170 years old. Thanks John for telling us of this discovery. It has been 23 years since we had articles on the Eagle City Post handstamps so I have included an updated research article on this topic. It is a good collecting area with much appeal.

Get More Involved

Perhaps it is time to start a new collecting interest in a section of carriers, locals or eastern expresses. It is also might be the time to expand a subject of interest in which you are already involved. Is it time for you to put together an exhibit of your own? It is certainly time to commit to attending a philatelic show—

you will be happy you did. It is time to make new friends and thank old philatelic friends for their valuable friendship.

2015 Annual Meeting

The Carriers and Locals Society will hold its annual meeting at Westpex in 2015. The show dates are April 24-26. It's not too early to make plans for attending.

Appreciation

I wish to thank the section editors for their contributions and hard work. Special thanks to Alan Cohen and John Bowman for being my constant critics and proofreaders for the last fifteen years and counting and thanks to David Snow for joining this group two years ago. David is also commended for doing good work as our Ad Manager. I wish to extend a special thank you to Alan Cohen for being our Auction Manager. We have had 26 auctions with the 27th one taking place in January 2015. The Society would not be able to continue without the commissions generated from these sales. Special thanks to Scott Trepel for his efforts in our field and for being our patron saint in memory of Richard Schwartz.

Mission Statement

The purpose of *The Penny Post* is to present original research articles in the fields of United States Carriers, Local Posts and Eastern Expresses. Forgeries in these areas are also researched. Articles are reviewed and assistance is provided by the Editor's section heads who comprise the editorial board.

Final Message

My message to you is to relax and get away from it all by looking, examining, researching, exhibiting, sharing and talking with fellow stamp collectors and Society members. Forget the world and enjoy your stamps and covers. May your horizons be broadened by the presentation of these articles. Happy Collecting and may your research be fruitful.

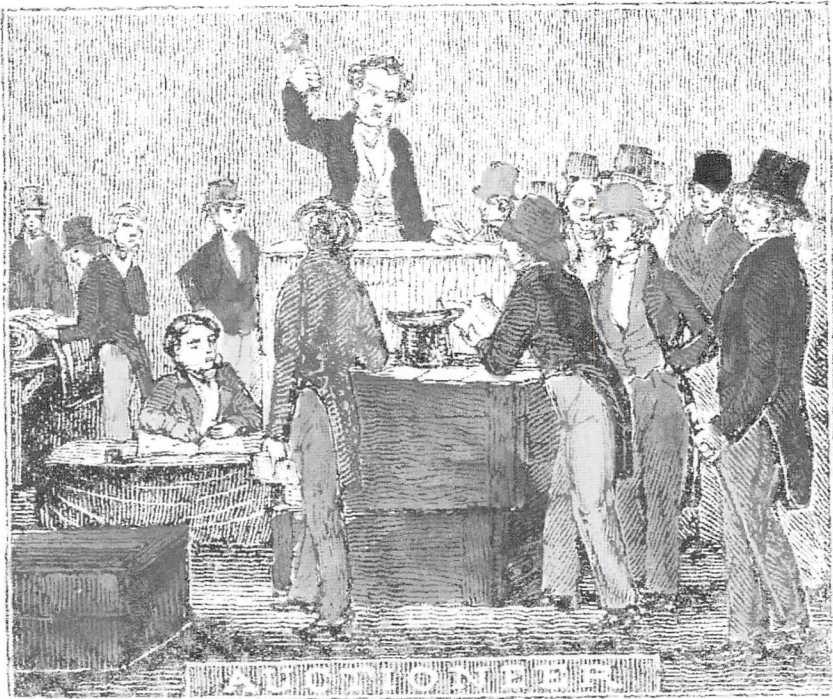
ADVERTISERS IN THIS ISSUE

	Page
Daniel F. Kelleher Auctions	46
Schuyler Rumsey Philatelic Auctions	47
Stanley M. Piller	48
Alan E. Cohen	Inside Front Cover
Eric Jackson	Inside Back Cover
Robert A. Siegel Auction Galleries, Inc.	Back Cover

Carriers and Locals Society Auction

**Our 27th Auction is scheduled
for January 22, 2015**

**Consignment Deadline:
December 19, 2014**



Public Stamp Auction

BLOODS Part 8: 15L8

By

Vernon R. Morris, Jr., MD

Daniel Blood purchased the Philadelphia Despatch Post, the city's first and only private post, on June 30, 1845, the last day before the infamous Independent Mails "Armageddon." Blood acquired the remaining 15L3 stamps, and ability to print the **world's first pictorial stamp**, 15L4. Blood & Co. altered the striding messenger design several times, first adding its namesake title "**D.O.BLOOD & CO.**" across the top in mid-September 1845, and by mid-1847 "**CITY DESPATCH**" across the middle of the stamp. Data based evidence of the combined 15L5 and 15L6, however, reveals that *only 18% (17 of 93) were outbound letters*.¹ Conversely, "striding messenger" stamps were soon servicing primarily door delivery "city letters," as defined by the final stamp design.

Within its first six months Blood & Co. developed a **new paradigm** of private postal service with an entirely new stamp design 15L7 "**For the POST OFFICE**," the **world's first special purpose stamp**. The company had divided and specialized their business model. If the "striding messenger" series of four developed into "city letters," the subsequent catalog series of three were "post office letters." The active period of service for 15L7 was virtually all of 1846, with only a few far late outliers. The 15L7 stamp design center declared "**CITY/DESPATCH/POST**," and was modified by the end of 1846 to create 15L8.

15L8 "Black"

The 24mm circle design shown in **Figure 1** was not too dissimilar from the original 1842 Philadelphia Despatch Post issues, 15L2 and 15L1. *Scott* has listed this adhesive stamp as 15L8 in "black" and 2 cents.² The 16.5mm inside circle proudly displayed "CITY / DESPATCH / PAID," a generic description of prepaid service. "POST" without serifs in 15L7 was replaced with "PAID" *with* serifs for 15L8. The term POST was prudently eliminated as they were located directly across from the Philadelphia *post* office in the historic Merchants Exchange Building.^{3,4}

The upper portion of the outer circle explicitly stated the intended purpose "For the POST OFFICE." The bottom half identified the company name "D.O.BLOOD & CO." The geometric "post office stamps" were **non-denominated**, as were the concurrent "striding messenger" pictorial city stamps. Not specifying

¹ Vernon R. Morris, Jr., MD, "Bloods Part 5: 15L5," *The Penny Post*, Vol. 22, No. 1, January 2014, Whole No. 86, pages 22, 23, 40.

² *Scott 2012 Specialized Catalogue of United States Stamps & Covers, Nineteenth Edition*, Scott Publishing Co., 2011, Sidney Ohio, page. 545.

³ John F. Watson; "Localities of the Philadelphia Post Office," *Annals of Philadelphia and Pennsylvania, Vol. III*, page. 477, Philadelphia, Stuart 1891; reports the post office was on the *north* side of Merchants Exchange Building.

⁴ Vernon R. Morris, Jr., MD, "Bloods Part 4: 15L4," *The Penny Post*, Vol. 21, No. 4, October 2013, Whole No. 85, pages 44, 45, 46.

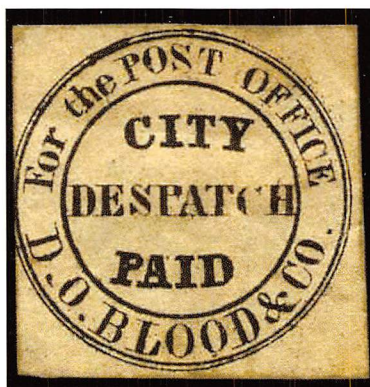


Figure 1. Unused 15L8 geometric “double circle” adhesive stamp “For the POST OFFICE” was in black and similar to 15L7 but POST in the center was replaced with “PAID.”

monetary value facilitated wholesale volume discounts, different pricing for each type of service, and yet potential for a global single stamp retail rate reduction.

No 15L8 (or 15L7) multiples off/on cover have been identified. Neither 15L8 nor 15L7 were perforated, and therefore required manual separation.

15L8 Description Census

1. **December 23, (1846);** blue folded letter; outbound to Maryland; cut to shape, manuscript “X” cancel; blue Clarke 70a;⁵ Philadelphia cds. To: “Mr Charly F. Pitt / Merchants / Baltimore”.⁶ Siegel 817 November 15, 1999 lot 506, Golden.
2. **January 1, 1847;** envelope; outbound to Pennsylvania; cut square, manuscript “X” cancel; blue Clarke 70a Philadelphia cds; manuscript “*W^m Atkins / Jan 1. 1847*” docket. To: “John Hickman Esqr. / West Chester/ Penn.”⁷ Herman Herst Jr October 1970 handwritten authentication on reverse. Bennett 335, 336, 337 March 4, 2011 lot 2394. April 11, 2011 PFC 49781. Morris collection.
3. **January 6, [1846];** folded letter; outbound to Pennsylvania; cut square, manuscript “X” cancel; blue Clarke 70a Philadelphia cds. To: Unknown #1 (Norristown). Siegel 825 January 20, 2000 lot 1596, Schwartz.

⁵ Tom Clarke, *A Catalog of PHILADELPHIA POSTMARKS, 18th Century to Present, Interim Listing*, page 21; 2012.

⁶ *Baltimore Directory 1845*, page 92 references Charles F. Pitt as a merchant at 12 Commerce.

⁷ [http://en.wikipedia.org/wiki/John_Hickman_\(congressman\)](http://en.wikipedia.org/wiki/John_Hickman_(congressman)) reports he was born on September 11, 1810 in West Bradford Township, Penna and was admitted to the bar in 1833. He served as district attorney for Chester County, Penna in 1845 and 1846. Hickman was elected to the United States House of Representatives from 1855 to 1863, and died on March 23, 1875.

4. **January 19, (1847)**; blue folded letter; outbound to Pennsylvania; cut square, manuscript “X” cancel; blue Clarke 70a Philadelphia cds. To: “Mrs John Pyle / West Chester / Pa”. Apfelbaum 281 October 21, 1972 lot 143. Siegel 908 March 17, 2006 lot 4602. September 13, 1990 PFC 231120.
5. **January 25, 1847**; folded letter; outbound to Washington D.C.; cut square, manuscript “X” cancel; blue Clarke 70a Philadelphia cds.⁸ To: “Commodore Warrington / Chief of the Bureau of Ordⁿ & Hyd / Washington / D.C”. Harmer 85 July 11, 2010 lot 916. August 30, 2010 PFC 489846. Morris collection.
6. **February 8, 1847**; folded letter; outbound to Pennsylvania; cut to shape, manuscript “X” cancel; blue Clarke 71a Philadelphia cds.⁹ To: “James Eritriken Esq^r. / Coffee Run. P.O. / Huntingdon County / Penns^a..” Lyons collection.
7. **February 9, (1847)**; folded letter; outbound to Pennsylvania; cut to shape, manuscript “X” cancel; blue Clarke 71b Philadelphia cds.¹⁰To: “Geo T. Chamberlain / Schuylkill Haven / Pa.” Eastland December 2, 1971 lot 574.
8. **February 13, 1847**; folded letter; outbound to Connecticut; cut square, uncanceled; tied by blue Clarke 71a Philadelphia cds. To: “M^{rs} M D Huntington- / Care Besyⁿ. Huntington Esqr / Norwich Town / Conn^t.” Shachat collection.
9. **February 16, 1847**; folded letter; outbound to New Jersey; two defective cut squares, each uncanceled; Bloods Handstamp Type 5; blue Clarke 71a Philadelphia cds., matching PAID in lozenge handstamp. To: “Henry. L. Southard Esq^r / Mount Holly / Burlington County / NJ.” Morris collection. Ex Shachat.
10. **February 20, 1847**; (folded letter); outbound to Delaware; cut to octagon; uncanceled; tied by blue Clarke 71a and Clarke 79a Philadelphia cds. To: Unknown #2 (Delaware). Siegel 285 March 31, 1965 lot 653. Lowe U.S.A.I *Basel* 3720 March 1, 1973 lot 1658. Ex Gibson.
11. **February 26, 1847**; folded letter; outbound to New York; cut square; uncanceled, tiny ink stain; red Clarke Type 430e PHILAD^A RAILROAD straight line double strike handstamp,¹¹ blue manuscript numeral “5”. To: “D.

⁸ Clarke Type 70a final four days.

⁹ Tom Clarke, *A Catalog of PHILADELPHIA POSTMARKS, 18th Century to Present, Interim Listing*, page 24; 2012, Clarke records the earliest Type 71a on January 7, 1847 and latest on September 21, 1848.

¹⁰ Tom Clarke, *A Catalog of PHILADELPHIA POSTMARKS, 18th Century to Present, Interim Listing*, page 24; 2012, Clarke records the earliest Type 71b on February 10, 1847 and latest on April 23, 1847; this example a new earliest date by one day.

¹¹ Tom Clarke, *A Catalog of PHILADELPHIA POSTMARKS, 18th Century to Present, Part II, Interim Listing*; 2012, Clarke, recorded from 1845 to 1857.

S. Kennedy Esq; / New York.”^{12,13} Siegel 773 March 26, 1996 lot 164. Siegel 791 June 25, 1997 lot 357. Siegel 797 December 12, 1997 lot 1932. Siegel 834 March 6, 2001 lot 720. February 10, 1998 PFC 323196.

12. **April 5, 1847**; folded letter; outbound to Missouri; creased cut square, uncanceled; blue Clarke 79a Philadelphia cds.¹⁴ To: “Franklin A. Dick Esq / St Louis / Missouri”. Siegel 927 December 20, 2006 lot 1077, Richardson. Rumsey 35 November 17, 2009 lot 1969. Rumsey 35 November 17, 2009 lot 1969. December 17, 2009 PFC 482357. Morris collection.
13. **April 24, 1847**; folded letter; outbound to Missouri; cut to shape, uncanceled, tied by blue PAID in lozenge, matching Clarke 79 Philadelphia cds. To: “Franklin A. Dick Esq / St Louis / Mo.” Rumsey 45 January 24, 2012 lot 1473. February 21, 2012 PFC 502347. Morris collection.
14. **June 20, 1847**; folded letter; outbound to Washington D.C.; severed cut square on reverse, manuscript “X” cancel; blue Clarke 70a Philadelphia cds, pencil docket “*Recd June 21. 1847*”. To: “Commodore. Warrington / Chief of the Bureau of Ordⁿ. & Hyd^f. / Washington. / D.C.” Rumsey 31 October 28, 2008 lot 1415. April 16, 2008 PFC 463609. Vailly collection.
15. **July 9, 1847**; folded letter; outbound to Maryland; cut square, uncanceled; tied by lightly struck blue Clarke 71a Philadelphia cds. To: “Jas. J. Tishel Esqre / Baltimore, Md.”¹⁵ Siegel 817 November 15, 1999 lot 503, Golden.
16. **July 27, 1847**; folded letter; outbound to England; cut square, uncanceled; tied by Clarke 71a and Clarke 79a Philadelphia cds., matching PAID in lozenge; manuscript “*per Steamer*” and tied by bold “1/-“ shilling due; 1847 Liverpool and Manchester circular postmarks on reverse. To: “Mr George Matinson / Care of Exc of John Owens Esq / Manchester / England”. Siegel 788 Rarities May 6, 1997 lot 272. July 18, 1997 PFC 316413. May 27, 2010 PFC 486190. Morris collection.
17. **July 28, 1847**; folded letter; outbound to Maryland; cut square, uncanceled; blue Clarke 71a Philadelphia cds. To: “Mssrs Stickney & Beatty / Baltimore, Md.”¹⁶ John Kaufmann 74 July 10, 1981 lot 302. Siegel 925 November 15, 2006 lot 1302, Kuphal. Siegel 980 December 11, 2009 lot 2990.

¹² Doggett’s 1842 New York City Directory, page 182 lists David S. Kennedy as merchant 41 Broad, house 2 Broadway.

¹³ Doggett’s 1847 New York City Directory lists David Kennedy as carman, E.13th corner above B.

¹⁴ Tom Clarke, *A Catalog of PHILADELPHIA POSTMARKS, 18th Century to Present, Interim Listing*, page 24; 2012, Clarke records the earliest Type 79a on February 10, 1847 and latest November 30, 1848.

¹⁵ <https://archive.org/stream/matchettsbaltimo1849balt#page/394/mode/2up>

¹⁶ <https://archive.org/stream/matchettsbaltimo1849balt#page/32/mode/2up>

18. **August 2, 1847**; folded letter; outbound to Delaware; cut square, uncanceled; blue Clarke 71a Philadelphia cds. To: "Mr John Joy / Wilmington P O / Delaware". Fox 390-391 October 12, 1981 lot 644. Stimmell collection.
19. **August 18, 1847**; unphotographed, folded letter; outbound New York; cut square, uncanceled; blue Clarke Type 430d New York & Phila RR cds, matching numeral "5" in circle handstamp. To: Unknown #3 (New York). Harmer Rooke 1071 March 20, 1957 lot 572, Caspary.
20. **September 3, 1847**; folded letter; outbound New York; cut square, uncanceled; red Clarke Type 430e PHILAD^A RAILROAD straight line handstamp, double strike. To: "C. H. Schneider Esq^r = / No21 S. William St / NewYork".¹⁷ January 22, 2013 PFC 509870.
21. **September 20, 1847**; folded letter; outbound New Jersey; cut square, uncanceled; blue Clarke Type 71a cds. To: "Elijah Bower / Mullica Hill / (New Jersey)". Siegel 820 January 18, 2000 lot 923.
22. **September 26, 1847**; (envelope); outbound to Pennsylvania; cut square, uncanceled; tied by blue Clarke 71a Philadelphia cds. To: "Aaron Sharpless / West Chester / Chester Co. / Pa-". Rumsey 8 November 11, 1999 lot 1840.
23. **September 27, 1847**; folded letter; outbound to Pennsylvania; cut square, uncanceled; tied by blue Clarke 71a Philadelphia cds; manuscript "*From A. Stevenson / Philadelphia. / Pennsylvania.*" To: "Tho^s.. B. Allen. / At Mr. Bolman's boarding School / West Chester. Pa." Rumsey 37 November 17, 2009 lot 1967. December 17, 2009 PFC 482356. Morris collection.
24. **October 14, (1847)**; folded letter; outbound to Pennsylvania; cut to octagon, uncanceled; tied by blue Clarke 71a Philadelphia cds. To: "Miss M H Morris / Germantown". Siegel 825 January 27, 2000 lot 1595, Schwartz. Siegel 908 March 17, 2006 lot 4603. Siegel 965 December 3, 2008 lot 1091, Geisler. January 16, 2009 PFC 473061. Ex Duckworth. Morris collection.
25. **October 15, 1847**; (envelope); outbound to Massachusetts; cut square, uncanceled; tied by blue grid in circle twice, each also cancelled the two 5 cent 1847 general issue stamps, matching blue Clarke 79a Philadelphia cds. To: "Eben Francis / Boston / Mass:." Robert Kaufmann 66 April 30, 1990 lot 1990, Hart. Gross collection.^{18,19}

¹⁷ Doggett's 1847 New York City Directory page 361 lists Charles H. Schneider as commercial merchant at 21 S. William and 47 Stone.

¹⁸ <https://archive.org/stream/bostondirectory4849bost#page/130/mode/2up>

¹⁹ Ebenezer Francis, 60 State; house 8 Pemberton square listed in The Boston Directory: 1848-1849, George Adams, Boston 1848, page 131.

26. **October 21, 1847**; blue folded cover; outbound to Maryland; cut square, uncanceled; blue Clarke 71a Philadelphia cds; 5 cent 1847 general issue tied by matching PAID in lozenge. To: "Msr^{rs} Garrett & Sons / Baltimore".²⁰ Siegel 771 December 12, 1995 lot 497, Stollnitz. Siegel 925 November 15, 2006 lot 1303, Kuphal. January 24, 2007 PFC 447389. Morris collection.
27. **November 5, (1847)**; folded blue letter; outbound to New Jersey; cut to shape, uncanceled; blue Clarke 71a Philadelphia cds., twice. To: "William Bettie / Yardville P.O. / Mercer Co / New Jersey". Siegel 825 January 20, 2000 lot 1597. Alexander collection.
28. **November 11, (1847)**; folded letter; outbound to Virginia; cut square, uncanceled; blue Clarke 71a Philadelphia cds. To: Unknown #4. September 15, 1981 sale.
29. **November 23, 1847**; folded letter; outbound to Virginia; torn cut square on reverse, uncanceled; blue Clarke 79a Philadelphia cds, red November 20 Rochester NY cds with matching red PAID. To: "Chas. Elet Esq C.C. / Pennsylvania / Wheeling / Va." Wiegant collection.
30. **November 26, (1847)**; folded letter; outbound to Pennsylvania; cut square, uncanceled; blue Clarke 71a Philadelphia cds. To: "M H&G, H Wells / Wyalusing / Bradford Co / Penn^{aa}".
31. **December 1, 1847**; folded letter; outbound to Illinois; cut square, uncanceled; vertical pair 5 cent 1847 general issue, each stamp tied by either faint blue Clarke 79 Philadelphia cds, or matching PAID in lozenge. To: "The Right Reverend / Philander chase, D.D., Presiding Bps. / Jubilee college – (Robin's Nest) / Peoria County / Illinois". Kaufmann 74 July 10-11, 1981 lot 166.
32. **December 8, (1847)**; folded letter; outbound to Vermont; cut square, uncanceled; blue Clarke Type 430d New York & Phila RR cds., matching numeral "10" in circle handstamp. To: "Mr. William H Cornwell. / West Hartford Windsor County / Vermont." Ex Hyzen. Ex Kirkland. August 10, 1989 APS 69448. Stimmell collection.²¹
33. **December 18, 1847**; folded letter; local delivery; cut to shape, uncanceled; Bloods Handstamp Type 5; gray advertising label on reverse. To: "Mr J J Mickley / 359 Market St". Harmer 85 July 11, 2010 lot 916. August 30, 2010 PFC 489845. Morris collection.

²⁰ <https://archive.org/stream/matchettsbaltimo1849balt#page/144/mode/2up>

²¹ The few recorded Clarke 430d examples are early Spring 1848 per August 10, 2012 email communication from Tom Clarke who reports the earliest recorded blue 430d on March 21, 1848 and latest on May 5, 1848; information not yet included in this Interim DVD.

34. **December 26, 1847**; folded letter; outbound to Maryland; cut square, uncanceled; blue Clarke 71a Philadelphia cds., twice; non-contemporaneous pencil marking “*Dec’ 1847*”. To: “Mssrs Stickney & Beatty / Baltimore, Md.” Rumsey 45 January 24, 2012 lot 1481.

35. **February 13, (1847-8)**; folded multicolor comic valentine letter; outbound to Pennsylvania; cut square, uncanceled; tied by blue Clarke 71a Philadelphia cds. To: “Doct I. Walker / Spread Eagle / Post Office / Pa”.²² Siegel 510 Rarities March 23, 1977 lot 222. September 9, 2002 PFC 385792. Morris collection.

36. **May 24, (1847-8)**; envelope; outbound to Pennsylvania; cut to shape, uncanceled; tied by blue Clarke 71a and Clarke 79a Philadelphia cds. To: “Cap^t. Daniel Dobbins / Erie / P.a.” Page December 6, 1963 lot 245. Kaufmann 7 November 14, 1972 lot 205. September 9, 2011 PFC 498916. Morris collection.

37. **June 7, (184-)**; envelope; outbound to New York; cut square, uncanceled; blue Clarke Type 430d New York & Phila RR cds, matching numeral “5” in circle handstamp. To: “Miss Abby E. Townsend / Care of John Townsend Esq^r / Albany / N.Y.” Rumsey 35 November 18, 2009 lot 1968. June 5, 2009 PFC 476847. Morris collection.

38. **June 12, (1947)**; folded letter; outbound to New York; cut square, uncanceled; blue Clarke Type 430d New York & Phila RR cds,²³ matching numeral “5” in circle handstamp, manuscript “*Single*”. To: “Mr William T. Taylor / Care of / Thomas T. Green, Druggist / No 399 Broadway On. Walker Sts / New York – “. Siegel 294 January 6, 1966 lot 205. Lowe U.S.A.I *Basel* 3720 March 1, 1973 lot 1659. Mohrmann 142 October 22, 1974 lot 629. Ex Gibson.

39. **June 12, (1847-8)**; (envelope), outbound to Pennsylvania; cut square, uncanceled; blue Clarke 71a Philadelphia cds. To: “Mr Henry R Hains. / Howard Post Office / Centre county / Penn^a”. Siegel 927 December 20, 2006 lot 1076, Richardson. Rumsey 35 November 17, 2009 lot 1970.

40. **June 22, (1847-8)**; (envelope), outbound to Pennsylvania; cut square, uncanceled; blue Clarke 71a Philadelphia cds. To: “Dr. Trenchard, / Queen St. above Shackamaxon / Kensington”. Fox 347-348 April 24, 1964 lot 358. Alexander collection.

²² Pennsylvania Postal History, The Post Offices and First Postmasters from 1775 to 1994, John Kay, Quarterman Publications, Inc. 1995 reports on page 175 a post office at Spread Eagle, Pa in Delaware County from 1804 until July 6, 1844; and on page 131 in Chester County from that date until January 22, 1887.

²³ Tom Clarke, *A Catalog of PHILADELPHIA POSTMARKS, 18th Century to Present, Part II, Interim Listing*; 2012, Clarke, recorded from 1847 to 1857.

41. **August 13, (1847-8)**; envelope; outbound to Pennsylvania; cut square, uncanceled; blue Clarke 71a Philadelphia cds. To: "W^m Jenks Esq^r / Attorney at Law / Brookville / Jefferson C^on / Pa".²⁴ Christies September 10, 1992 lot 975. Wolffers 100 October 28-31, 1981 lot 1537. Stimmell collection.

42. **August 14, (1847-8)**; folded letter; outbound to New Jersey; cut square, uncanceled; blue Clarke 71a Philadelphia cds.; vermilion advertising label on reverse. To: "William Bettle / Yardville P.O. / Mercer Co. / New Jersey". Alexander collection.

43. **August 24, (1847-8)**; folded letter; outbound to Massachusetts; cut square, (manuscript "X" cancel), blue Clarke 79a Philadelphia cds, matching PAID in lozenge, Boston August 27 cds. To: "Mrs McBlair / (Liepert W. McBlair) / ----". Stolow May 18, 1965 lot 721.

44. **August (1847-8)**; folded letter; outbound to Missouri; cut square, uncanceled; blue Clarke Type 79a Philadelphia cds. To: "Mr Jacob C Beideman / St Louis - ----".^{25,26} Phillips July 16, 1986 lot 542 (not verified).

45. **September 14, (1847-8)**; folded letter; outbound to New Jersey; cut square, uncanceled; blue Clarke Type 430d New York & Phila RR cds; manuscript "Mrs. Julia Hall- / Sept 13/14/15"; 5 cent 1847 tied by manuscript "X" cancel. To: "Rev. Ulrich Miller / Mount Holly / New Jersey". Lowe 3887 October 8, 1974 lot 231. H.R. Harmer 2352 July 22, 1976 lot 1330. Siegel 927 December 20, 2006 lot 1075, Richardson.

46. **October 7, (1847-8)**; envelope; outbound to Maine; cut to shape, uncanceled; blue Clarke 79a Philadelphia cds; red ink spots at left. To: "Mr. Daniel Farrington / Brewer Center / Me." March 18, 2013 PFC511137.

47. **October 21, (1847-8)**; front; outbound to Washington D.C.; cut to shape, uncanceled. Clarke 79a Philadelphia cds. To: Unknown #5 / (Alexandria D.C.). Kenedi 126 June 1, 1975 lot 751.

²⁴ <http://www.pa-roots.org/data/read.php?4,684405> reports that was born in 1821 and died in 1902. Jenks moved to Brooksville in 1843, was elected as a one term state representative in 1866, and elected president judge of the Eighteenth Judicial District in 1871, retiring from the bench in 1882.

²⁵ <http://digital.wustl.edu/cgi/t/text/pageviewer-idx?c=cty;cc=cty;idno=cty1845.0001.008;seq=63> reports that in 1845 J.C. Beideman was a merchant at 236 Broadway)

²⁶ Oscar Tully Shuck, *Bench and bar in California*, Occident Printing, 1889, page 35 reported that J.C. Beideman was a native of Philadelphia, died in San Francisco on July 8, 1865, and had been the largest real estate holder in the city.

48. **(1847-8)**; folded letter; outbound to Pennsylvania; cut to octagon, uncanceled; blue Clarke 71a Philadelphia cds., matching PAID in lozenge. To: Unknown #6 (Pottsville). Phillips February 26, 1974 lot 137 (not verified).
49. **(1847-8)**; folded letter; outbound to Pennsylvania; cut square, uncanceled; blue Clarke 71a Philadelphia cds. To: "Thomas Ross Esqr / Doylestown / Pa".²⁷ Wolffers 72 September 14-16, 1978 lot 469.
50. **(1847-8)**; folded letter; outbound to Maryland; cut square, uncanceled; blue Clarke 71a Philadelphia cds. To: "Mr Charly F Pitt ----(Baltimore)". Kenedi 124 April 13, 1975 lot 604.
51. **(1847-8)**; (folded letter); outbound to Washington D.C.; cut square, manuscript "X" cancel; blue indistinct Philadelphia cds, matching PAID in lozenge. To: "Ho- / Joseph R. Ingersoll / M.D. / Washington". Harmer Rooke 1746-1749 February 20-22, 1974 lot 730.
52. **July 21, 1848**; folded blue letter; outbound to Delaware; cut to shape, uncanceled; blue Clarke 71a Philadelphia cds. To: "Jeremiah N Duncan Esq / Wilmington / Delaware". Siegel 834 March 6, 2001 lot 721. 2000 PFC (not verified).
53. **March 3, (184-)**; (envelope); outbound to New York; cut square, uncanceled; red New York cds., matching Clarke Type 430e PHILAD^A RAILROAD straight line handstamp, double strike. To: "Miss Mary A. Boardman- / Troy- / N.York". Siegel 830 November 14, 2000 lot 448, Hall. Ex Mason.
54. **March, (184-)**; (folded letter); outbound (unknown); cut square, uncanceled; (blue) indistinct Philadelphia cds. To: Unknown #7. Eastland 16 September 14, 1968 lot 377.
55. **April 15, (184-)**; folded letter; outbound to Washington D.C.; cut square, uncanceled; tied by blue Baltimore cds.²⁸ To: "Rev. U. Ward / On Missouri Ave near 4 ½ street / Washington, / D.C."²⁹ Harmer 1071 March 20, 1957 lot 573, Caspary. Siegel 830 November 13, 2000 lot 447, Hall. Ex Sloane.

²⁷ <http://bioguide.congress.gov/scripts/biodisplay.pl?index=R000455> reports that he was born in 1807 and died in 1865. Tomas served as U.S. Representative from 1849 to 1853.

²⁸ David G. Phillips, *American Stampless Cover Catalog, Volume I*; Fourth Edition, Maryland, page 147, 1987, North Miami, FL. Reports Type 30 has been recorded from 1843 to 1851.

²⁹ Kiplinger Library July 2, 2014 email communication reported that Washington City Directories for 1843, 1846, 1850, 1853, and 1858 identified Ulysses Ward on Missouri Avenue between 4 ½ and 6th Streets West. In 1846 he was the editor of *Columbian Fountain*; in 1850 he was president of Washington Gas Co. Rev. Ward died in 1868 at 76.

56. **August 21, (184-);** folded letter; outbound New York; cut square, uncanceled; red New York cds., tied by matching Clarke Type 430e PHILAD^A RAILROAD straight line handstamp, manuscript “+5/10” and “Aug 23”. To: “Mrs McBlair. / Liepet W. McBlair / Boston ~~New Port~~ / In ~~Rhode Island~~.” Parke-Bernet May 6, 1941 lot 1031. Siegel 830 November 14, 2000 lot 446, Hall. March 28, 2001 PFC 365953. Morris collection.
57. **Undated;** folded letter; outbound to New York; cut square, uncanceled; blue indistinct Philadelphia cds, manuscript “5”. To: “Mr William Remington / Lana Lamson & Co / New York”. Lyons collection.
58. **Undated;** folded letter; outbound to North Carolina; cut square, uncanceled, (ink bleed through tied); manuscript “Way 10”. To: “L.A. Paschall Esqr / Oxford / N.C”. Kelleher 596 November 9, 1994 lot 2134. Stimmell collection.
59. **Undated;** folded letter; outbound to New Jersey; cut square, uncanceled, (ink spot tied); manuscript blue “Way5”. To: “Mr. W^m. P Tenbroak / Brown’s Mills / near Mount Holly / N.J.” Stimmell collection.
- A. (1847); Circular Type II; cut square, uncanceled; manuscript “*Three Deliveries 7&10 A.M. & 2 ½ P.M.*”. To: “*2 above Race / Buck Hotel*”. Siegel 820 January 18, 2000 lot 917. March 8, 2000 PFC 351712. Morris collection.
- B. (1847); Circular Type II; cut square, uncanceled. Frajola June 7, 1990 lot 378, Middendorf. Siegel 817 November 15, 1999 lot 497. Specter collection.

Excluded 15L8 Covers

No counterfeit covers were identified. Furthermore, no covers have been excluded from the data base for lack of sufficient evidence. Two circulars have survived, each with uncanceled demonstration 15L8 and 15L5 samples, neither of which were intended for postal service. They have been included but sequestered in the data base of 15L8 stamps intended for postal service.

15L8 Photographic Census

Of the 59 identified 15L8 stamps genuine on cover, all but one have been previously photographed in auction catalogs and philatelic literature. The 58 photographed covers have been posted on the Carriers and Locals Society website. The sole exception (census number 19) hails from the famous Caspary sale. Although a photograph was not included in the auction catalog, the description sufficiently distinguished it from all others in the data base.

Forty two, 71%, are in color. Only 17 images are in black and white (census number 3, 7, 10, 21, 22, 28, 31, 38, 43, 44, 47, 48, 49, 50, 51, 52, and 54).

One of the 59 is a cover *front*. Old auction catalogs did not always reveal the cover’s entire address. No auction photographs, however, were reduced to the stamp only.

Table I. 15L8 genuine on cover tabulated chronologically. Parenthesis used for information without absolute certainty, but believed probable based upon available information.

No.	DATE	COVER	15L8	CANCEL	TIED	LABEL
1	December 23, (1846)	folded letter	cut to shape	manuscript "X"	no	-
2	January 1, 1847	envelope	cut square	manuscript "X"	no	-
3	January 6, [1846]	folded letter	cut square	manuscript "X"	no	-
4	January 19, (1847)	folded letter	cut square	manuscript "X"	no	-
5	January 25, 1847	folded letter	cut square	manuscript "X"	no	-
6	February 8, 1847	folded letter	cut to shape	manuscript "X"	no	-
7	February 9, (1847)	folded letter	cut to shape	manuscript "X"	no	-
8	February 13, 1847	folded letter	cut square	uncancelled	blue cds	-
9	February 16, 1847	folded letter	2 defective cut squares	uncancelled	no	-
10	February 20, 1847	(folded letter)	cut to octagon	uncancelled	blue cds	-
11	February 26, 1847	folded letter	cut square	uncancelled (tiny ink stain)	no	-
12	April 5, 1847	folded letter	cut square	uncancelled	no	-
13	April 24, 1847	folded letter	cut to shape	uncancelled	blue lozenge	-
14	June 20, 1847	folded letter	severed cut square on reverse	manuscript "X"	no	-
15	July 9, 1847	folded letter	cut square	uncancelled	blue cds	-
16	July 27, 1847	folded letter	cut square	uncancelled	blue cds bold "J/- "	-
17	July 28, 1847	folded letter	cut square	uncancelled	no	-
18	August 2, 1847	folded letter	cut square	uncancelled	no	-
19	August 18, 1847	folded letter	cut square	(traces of blue)	no	-
20	September 3, 1847	folded letter	cut square	uncancelled	no	-
21	September 20, 1847	folded letter	cut square	uncancelled	no	-
22	September 26, 1847	(envelope)	cut square	uncancelled	no	-
23	September 27, 1847	folded letter	cut square	uncancelled	no	-
24	October 14, (1847)	folded letter	cut to octagon	uncancelled	blue cds	-
25	October 15, 1847	(envelope)	cut square	uncancelled	blue grid	-
26	October 21, 1847	folded letter	cut square	uncancelled	no	-
27	November 5, (1847)	folded letter	cut to shape	uncancelled	no	-
28	November 11, (1847)	folded letter	cut square	uncancelled	no	-
29	November 23, 1847	folded letter	torn cut square on reverse	uncancelled	no	-

Table I. (cont'd)

FEDERAL STAMPS & MARKS	ADDRESSEE	OUTBOUND	No.
blue Clarke 70a Philadelphia cds	Mr Charly F. Pitt / Merchants / Baltimore	Maryland	1
blue Clarke 70a Philadelphia cds manuscript <i>Wm Atkins / Jan 1. 1847</i>	John Hickman Esqr. / West Chester / Penn.	Pennsylvania	2
blue Clarke 70a Philadelphia cds	Unknown #1	Pennsylvania	3
blue Clarke 70a Philadelphia cds	Mrs John Pyle / West Chester / Pa	Pennsylvania	4
blue Clarke 70a Philadelphia cds	Commodore Warrington / Chief of Bureau of Ordn & Hyd / Washington D.C.	Washington D.C.	5
blue Clarke 71a Philadelphia cds	James Eritriken Esqr. / Coffee Run. P.O. / Huntingdon County / Pennsa	Pennsylvania	6
blue Clarke 71b Philadelphia cds	Geo. T. Chamberlain / Schuylkill Haven / Pa.	Pennsylvania	7
blue Clarke 71a Philadelphia cds	Mrs M D Huntington- / Care Besyn. Huntington Esqr / Norwich Town / Connt.	Connecticut	8
blue Clarke 71a Philadelphia cds blue PAID in lozenge Bloods Handstamp Type 5	Henry Southard Esqr / Mount Holly / Burlington County / NJ.	New Jersey	9
blue Clarke 71a Philadelphia cds blue Clarke 79a Philadelphia cds	Unknown #2	Delaware	10
red Clarke 430e PHILADA RAILROAD blue manuscript "5 "	D.S.Kennedy Esq. / New York	New York	11
blue Clarke 79a Philadelphia cds	Franklin A. Dick Esq / St Louis / Missouri	Missouri	12
blue Clarke 79a Philadelphia cds; PAID in lozenge	Franklin A. Dick Esq / St Louis / Mo.	Missouri	13
blue Clarke 70a Philadelphia cds manuscript <i>Recd June 21. 1847</i>	Commodore. Warrington / Chief of Bureau of Ordn & Hyd / Washington. / D.C.	Washington D.C.	14
blue Clarke 71a Philadelphia cds	Jas. J. Tishel Esqre / Baltimore. Md.	Maryland	15
blue Clarke 71a and 79a Philadelphia cds blue PAID in lozenge Manchester and Liverpool datestamps on reverse manuscript " <i>per Steamer</i> " and bold "I/-"	Mr George Matinson / Care of Exc of John Owens Esq / Manchester / England	ENGLAND	16
blue Clarke 71a Philadelphia cds	Msrs Stickney & Beatty / Baltimore, MD.	Maryland	17
blue Clarke 71a Philadelphia cds	Mr John Joy / Wilmington P O / Delaware	Delaware	18
(blue Clarke 430d New York & Phila RR)	Unknown #3	New York	19
red Clarke 430e PHILADA RAILROAD	C.H.Schneider Esqr= / No21 S. William St / <u>New York</u>	New York	20
blue Clarke 71a Philadelphia cds	Elijah Bower / Mullica Hill / (New Jersey)	New Jersey	21
blue Clarke 71a Philadelphia cds	Aaron Sharpless / West Chester / Chester Co. / Pa-	Pennsylvania	22
blue Clarke 71a Philadelphia cds manuscript <i>From A.Stevenson/ Philadelphia</i>	Thos. B. Allen / At Mr. Bolman's boarding School West Chester. Pa.	Pennsylvania	23
blue Clarke 71a Philadelphia cds	Miss M H Morris / Germantown	Pennsylvania	24
blue Clarke 79a Philadelphia cds 1847 5 cent tied by blue grid in circle	Eben Francis / Boston / Mass:	Massachusetts	25
blue Clarke 71a Philadelphia cds 1847 5 cent tied by blue PAID in lozenge	Msrs Garrett & Sons / Baltimore	Maryland	26
blue Clarke 71a Philadelphia cds, twice	William Bettie / Yardville P.O. / Mercer Co / New Jersey	New Jersey	27
blue Clarke 71a Philadelphia cds	Unknown #4	Virginia	28
blue Clarke 79a Philadelphia cds red Rochester NY cds, matching PAID	Chas. Elet Esq C.C. / Pennsylvania / Wheeling / Va.	Virginia	29

Table I. (cont'd) 15L8 genuine on cover tabulated chronologically.
 Parenthesis used for information without absolute certainty, but believed
 probable based upon available information.

No.	DATE	COVER	15L8	CANCEL	TIED	LABEL
30	November 26, (1847)	folded letter	cut square	uncancelled	no	-
31	December 1, 1847	folded letter	cut square	uncancelled	no	-
32	December 8, (1847)	folded letter	cut square	uncancelled	no	-
33	December 18, 1847	folded letter	cut to shape	uncancelled	no	gray
34	December 26, 1847	folded letter	cut square	uncancelled	no	-
35	February 13, (1847-8)	folded letter	cut square	uncancelled	blue cds	-
36	May 24, (1847-8)	envelope	cut to shape	uncancelled	blue cds	-
37	June 7, (1847-8)	envelope	cut square	uncancelled	no	-
38	June 12, (1847-8)	folded letter	cut square	uncancelled	no	-
39	June 12, (1847-8)	(envelope)	cut square	uncancelled	no	-
40	June 22, (1847-8)	(envelope)	cut square	uncancelled	no	-
41	August 13, (1847-8)	envelope	cut square	uncancelled	no	-
42	August 14, (1847-8)	folded letter	cut square	uncancelled	no	vermillion
43	August 24, (1847-8)	folded letter	cut square	(manuscript "X")	no	-
44	August, (1847-8)	folded letter	cut square	uncancelled	no	-
45	September 14, (1847-8)	folded letter	cut square	uncancelled	no	-
46	October 7, (1847-8)	envelope	cut to shape	uncancelled	no	-
47	October 21, (1847-8)	front	cut to shape	uncancelled	no	-
48	(1847-8)	folded letter	cut to octagon	uncancelled	no	-
49	(1847-8)	folded letter	cut square	uncancelled	no	-
50	(1847-8)	folded letter	cut square	uncancelled	no	-
51	(1847-8)	(folded letter)	cut square	manuscript "X"	no	-
52	July 21, 1848	folded letter	cut to shape	uncancelled	no	-
53	March 3, (184-)	(envelope)	cut square	uncancelled	no	-
54	March, (184-)	(folded letter)	cut square	uncancelled	no	-
55	April 15, (184-)	folded letter	cut square	uncancelled	blue cds	-
56	August 21, (184-)	folded letter	cut square	uncancelled	red sl	-
57	Undated	folded letter	cut square	uncancelled	no	-
58	Undated	folded letter	cut square	uncancelled	(ink bleed)	-
59	Undated	folded letter	cut square	uncancelled	(ink spot)	-
A	(1847)	circular Type II	cut square	uncancelled	no	-
B	(1847)	circular Type II	cut square	uncancelled	no	-

Table I. (cont'd)

FEDERAL STAMPS & MARKS	ADDRESSEE	OUTBOUND	No.
blue Clarke 71a Philadelphia cds	M H&G, H Wells / Wyalusing / Bradford Co / Penna	Pennsylvania	30
blue Clarke 79a Philadelphia cds, tied 1847 stamps 1847 5 cent pair cancelled by blue PAID in lozenge	The Right Reverend / Philander chase, D.D., Presiding Bps. / Jubilee college - (Robin's Nest) / Peoria County / Illinois	Illinois	31
blue Clarke 430d New York & Phila RR blue numeral 10 in circle handstamp	Mr. William H Comwell. / West Hartford Windsor County / Vermont	Vermont	32
Bloods Handstamp Type 5	Mr J J Mickley / 359 Market St	Philadelphia old city	33
blue Clarke 71a Philadelphia cds, twice	Msrs Stickney & Beatty / Baltimore, Md.	Maryland	34
blue Clarke 71a Philadelphia cds	Doct I. Walker / Spread Eagle / Post Office / Pa	Pennsylvania	35
blue Clarke 71a and 79a Philadelphia cds	Capt. Daniel Dobbins / Erie / P.a.	Pennsylvania	36
blue Clarke 430d New York & Phila RR blue numeral 5 in circle	Miss Abby E. Townsend / Care of John Townsend Esqr / Albany, N.Y.	New York	37
blue Clarke 430d New York & Phila RR blue numeral 5 in circle	Mr William T. Taylor / Care of / Thomas T. Green, Druggist / No 399 Broadway On. Walker Sts / New York -	New York	38
blue Clarke 71a Philadelphia cds	Mr Henry R Hains. / Howard Post Office / Center county / Penna	Pennsylvania	39
blue Clarke 71a Philadelphia cds	Dr. Trenchard, / Queen St. above Shackamaxon / Kensington	Pennsylvania	40
blue Clarke 71a Philadelphia cds	Wm Jenks Esqr / Attorney at Law / <u>Brookville</u> / Jefferson Con / Pa	Pennsylvania	41
blue Clarke 71a Philadelphia cds	William Bettle / Yardville P.O. / Mercer Co. / New Jersey	New Jersey	42
blue Clarke 79a Philadelphia cds; PAID in lozenge Boston cds	Mrs. McBlair / (Liepert W. McBlair) / ---	Massachusetts	43
blue Clarke 79a Philadelphia cds	Mr Jacob C Breideman / St Louis	Missouri	44
blue Clarke 430d New York & Phila RR 1847 5 cent tied by manuscript "X"	Rev. Ulrich Miller / Mount Holly / New Jersey	New Jersey	45
blue Clarke 79a Philadelphia cds	Mr. Daniel Farrington / Brewer Center / Me.	Maine	46
blue Clarke 79a Philadelphia cds	Unknown #5	Washington D.C.	47
blue Clarke 71a Philadelphia cds; PAID in lozenge	Unknown #6	Pennsylvania	48
blue Clarke 71a Philadelphia cds	Thomas Ross Esqr / Doylestown / Pa	Pennsylvania	49
blue Clarke 71a Philadelphia cds	Mr Charly F Pitt --	Maryland	50
blue indistinct Philadelphia cds; PAID in lozenge	Ho- / Joseph R. Ingesoll / M.D. / Washington	Washington D.C.	51
blue Clarke 71a Philadelphia cds	Jeremiah N Duncan Esq / Wilmington / Delaware	Delaware	52
red Clarke 430e PHILADA RAILROAD red New York cds	Miss Mary A. Boardman- / Troy- / N.York	New York	53
blue indistinct Philadelphia cds	Unknown #7	Unknown	54
blue Baltimore cds	Rev. U. Ward / On Missouri Ave near 4 1/2 street / Washington D.C.	Washington D.C.	55
red Clarke 430e PHILADA RAILROAD red New York cds manuscript "+5/10" and "Aug 23"	Mrs. McBlair. / Liepet W. McBlair / Boston New Port In Rhode Island	Massachusetts	56
blue indistinct Philadelphia cds manuscript "5"	Mr William Remington / Lana Lamson & Co / New York	New York	57
manuscript "Way 10"	L.A. Paschall Esqr / Oxford / N.C.	North Carolina	58
blue manuscript "5"	Mr. Wm P. Tenbroak / Brown's Mills / near Mount Holly / N.J.	New Jersey	59
-	pencil manuscript "2 above Race Buck Hotel"	(local delivery)	A
-	-	unused	B

15L8 Cover Data Base

A 2% survival rate of private posts covers during this period has been recently selected for this series of articles.³⁰ Fifty-nine genuine examples suggest an original population of *approximately 2950*.

15L8 Service Time

All but 3 of the 59 covers provide some form of dated information. **Table 1** reveals that as many as 27 are *date certain* (census number 2, 3, 5, 6, 8, 9, 10, 11, 12, 13, 14, 15, 16, 17, 18, 19, 20, 21, 22, 23, 25, 26, 29, 31, 33, 34, 52) since they include the full day, month, and year. Another 25 covers are incomplete, but a reasonable time period can be determined from auxiliary markings such as Philadelphia circular datestamps.³¹ Eight of the 25 can be determined to within a *one* year period (census number 1, 4, 7, 24, 27, 28, 30, and 32 by Clarke Type). Seventeen of the 25 can be determined to within a *two* year period (census numbers 35 through 51).

Another 4 (census numbers 53 through 56) provide only month and day information without *any* leads for year of service. Unfortunately, three are completely undated (census numbers 57, 58, and 59).

1846-1847 has been designated by the *Scott Catalog*³² as the time period for the entire series of three double circle stamps. The philatelic literature has previously reported a 15L8 appearance by February 9, 1847.³³ **Table I** evidence reveals that the initial 34 of 59 covers, about 58%, *are from 1847, with the first one during the final week of 1846*. The next 18 are all very likely before the end of 1848, based upon Clarke Type (some possibly 1847). Therefore, 52 of 59 covers were very likely serviced during the two year period of 1847 and 1848. The final 7 covers (census numbers 53 through 59), however, have no evidence to suggest which year they were serviced, some being possible late outliers.

The median date of the initial 52 covers is October 21, 1846 (census number 26). Approximate volume by year is graphically shown in **Figure 2**. All 7 undated examples were arbitrarily assigned to 1849, while some may even be far outliers in 1850, or perhaps during 1847-1848.

³⁰ Vernon R. Morris, Jr., MD, "Bloods Part 6: 15L6," *The Penny Post*, Vol. 22, No. 2, April 2014, Whole No. 87, page 38.

³¹ Vernon R. Morris, Jr., MD, "Bloods Part 6: 15L6," *The Penny Post*, Vol. 22, No. 2, April 2014, Whole No. 87, page 38.

³² *Scott 2012 Specialized Catalogue of United States Stamps & Covers, Nineteenth Edition*, Scott Publishing Co., 2011, Sidney Ohio, page 545.

³³ Calvet M. Hahn, "Authenticating the T. Walters Local," *The Collectors Club Philatelist*, Vol. 73, No. 6, Nov-Dec 1994, page 335.

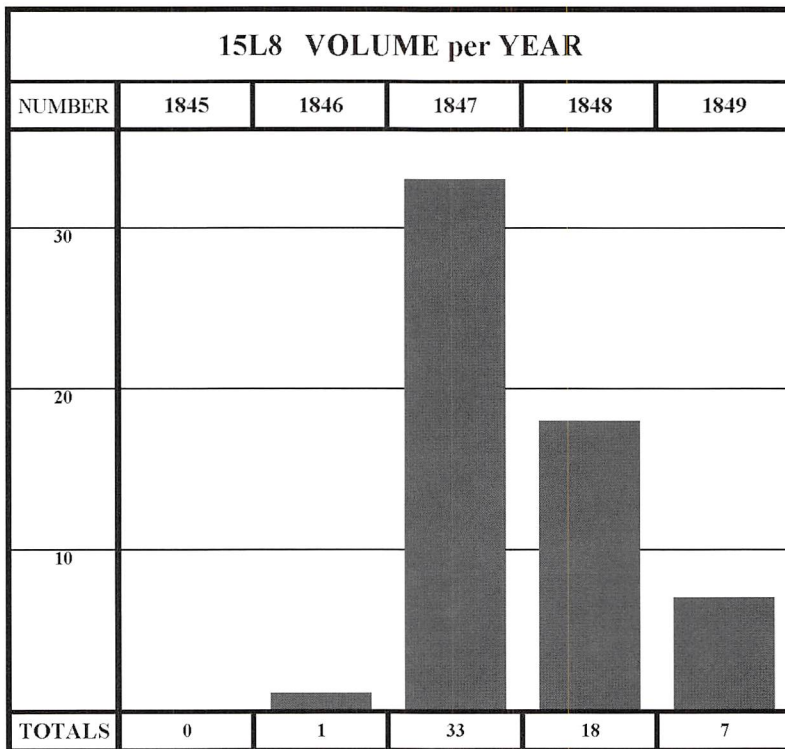


Figure 2. 15L8 volume per year reveals that most were 1847.

The *earliest recorded example is an untied December 23, (1846) cover* (census number 1), shown in **Figure 3**. Year 1846 has been obtained from the very reliable Siegel auction catalog descriptions. Moreover, important auxiliary information has been derived from the government cds. Clarke 70a has been recorded as early as April 26, 1846, and as late as January 29, 1847. December 23 is therefore *compatible with only 1846*, supporting the catalog description. Furthermore, the next four chronological examples were during January 1847, all bearing the same Clarke Type 70a marking. *December 23, 1846 is not an outlier*, but a companion to the next chronological cover which is *date certain* January 1, 1847 (census number 2). Paradoxically, the third example on January 6th (census number 3) was surprisingly [1846], an obvious failure by the sender to properly change to the next calendar year. The earliest 15L8 *tied* to cover was not until February 13, 1847 (census number 8), **Figure 4**.

The latest recorded example in any census is typically difficult to determine. *July 21, 1848 is the latest date certain 15L8 example* (census number 52), again per Siegel auction description, **Figure 5**. No covers are confirmed 1849. Eleven examples (census number 41 through 51) were possibly placed into service after July 21, 1848, although may as well have been late 1847. Six of these are excluded from 1848 because they bear Clarke Type 71a or Type 79a, respectively recorded



Figure 3. The earliest recorded 15L8 was an untied December 23 (1846) folded letter addressed to Baltimore. A “cut to shape” stamp was manuscript “X” cancelled.



Figure 4. A February 18, 1847 folded letter addressed to Connecticut bears the earliest 15L8 tied by a blue Philadelphia circular datestamp.



Figure 5. The latest date *certain* 15L8 was an uncanceled “cut to shape” stamp on a folded letter addressed to Delaware.

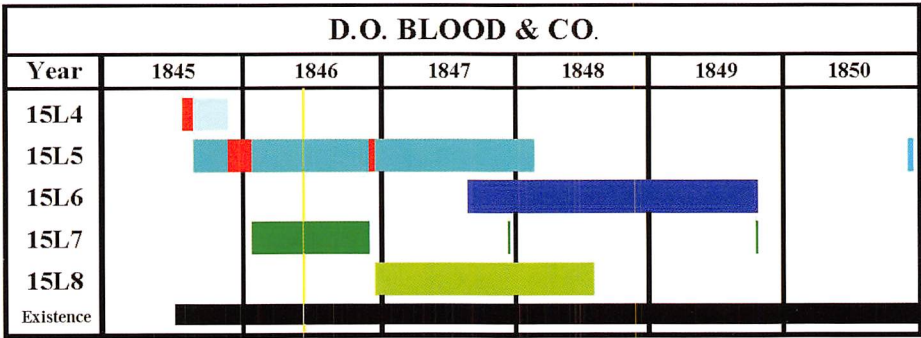


Figure 6. Timeline for all Blood & Co. stamps shows 15L8 throughout all 1847 and at least half of 1848. Further updated 15L5 philatelic exclusive period as shown in red, and mid 1846 rate reduction as thin yellow vertical line.

early such as January 7, 1847³⁴ and February 10, 1847,³⁵ but cannot be arbitrarily assigned to the possible late 1848 year, at the peril of “manufacturing” a latest recorded date.

Based upon currently available data, it is reasonable to consider **the earliest recorded 15L8 as December 23, 1846, and the latest date certain recorded on**

³⁴ Tom Clarke, *A Catalog of PHILADELPHIA POSTMARKS, 18th Century to Present, Interim Listing*, page 24; 2012.

³⁵ Tom Clarke, *A Catalog of PHILADELPHIA POSTMARKS, 18th Century to Present, Interim Listing*, page 24; 2012.

July 21, 1848. The respective conservative 15L8 philatelic lifespan was 82 weeks, or 19 months. At least 41 covers, and possibly 52 come from this period. Due to the possibility of several far outliers, 7 of the 59 were withheld from the time volume calculations of the active philatelic period.

Since the introduction of the final “striding messenger” 15L6 was not until June 30, 1847,³⁶ fourteen 15L8 examples predated 15L6 by six months (almost one quarter of the 15L8 data base). As with the preceding 15L7 “post office” stamp, *Scott Catalog* nomenclature for Blood & Co. has been *chronologically group specific* rather than stamp specific in the order of appearance.^{37,38} Data based evidence of surviving covers indicates the **chronological stamp specific sequence is 15L4, 15L5, 15L7, 15L8, 15L6**, graphically demonstrated in **Figure 6**. The given *Scott Catalog* numbers have been arranged by group of striding messenger stamps followed by the group of double circle stamps.

15L8 Service Location

The final destinations of 59 covers are summarized in **Table II**. *All except one (census number 33) were outbound*; collected from Blood’s boxes, sorted at the Blood & Co. office, and easily delivered across the street to the Philadelphia post office for outbound inter-city government mail. Pennsylvania was the most common destination state receiving 19; 16 of which were outside of Philadelphia County, and three in Philadelphia County (census number 24, 33, and 40). Next was 7 to the state of New York; 6 each to New Jersey and Maryland; 5 to Washington D.C.; 3 each to Massachusetts, Delaware, and Missouri; 2 to Virginia; 1 each to Connecticut, Vermont, Maine, North Carolina, and Illinois. One to England. One is unknown.

Evidence based data reveals that only 1 of 59 covers (less than 2%, of 15L8) serviced a local address which otherwise required the more expensive striding messenger city stamp, a rare miscue by Blood & Co.³⁹ The contemporary map of Philadelphia County in **Figure 7** identified the destination of 3 covers, only one in the old city.

One circular (census letter A) included a pencil manuscript “2 above *Race Buck Hotel*,” was probably posted locally, and delivered there by a Blood’s messenger.^{40,41}

³⁶ Vernon R. Morris, Jr., MD, “Bloods Part 6: 15L6,” *The Penny Post*, Vol. 22, No. 2, April 2014, Whole No. 87, pages 31, 38, 39, 41, 54.

³⁷ Vernon R. Morris, Jr., MD, “Bloods Part 2: 15L1,” *The Penny Post*, Vol. 83, No. 2, April 2013, Whole No. 83, pages 53, 58.

³⁸ Vernon R. Morris, Jr., MD, “Bloods Part 7: 15L7,” *The Penny Post*, Vol. 22, No. 3, July 2014, Whole No. 88, page 36.

³⁹ Vernon R. Morris, Jr., MD, “Bloods Part 7: 15L7,” *The Penny Post*, Vol. 22, No. 3, July 2014, Whole No. 88, pages 50, 51, 54.

⁴⁰ Vernon R. Morris, Jr., MD, “Bloods Part 7: 15L7,” *The Penny Post*, Vol. 22, No. 3, July 2014, Whole No. 88, pages 46, 47.

⁴¹ Email communication August 28, 2014 from Dana Dorman of the Historical Society of Pennsylvania reported that a newspaper advertisement in 1844 referred to “Capt. Archambault’s Buck Hotel. 1849 advertisements located it at 139 N. 2nd Street between Race and Vines Streets, probably on the east side of 2nd. Civil War recruits were able to sign up at the Buck Hotel.

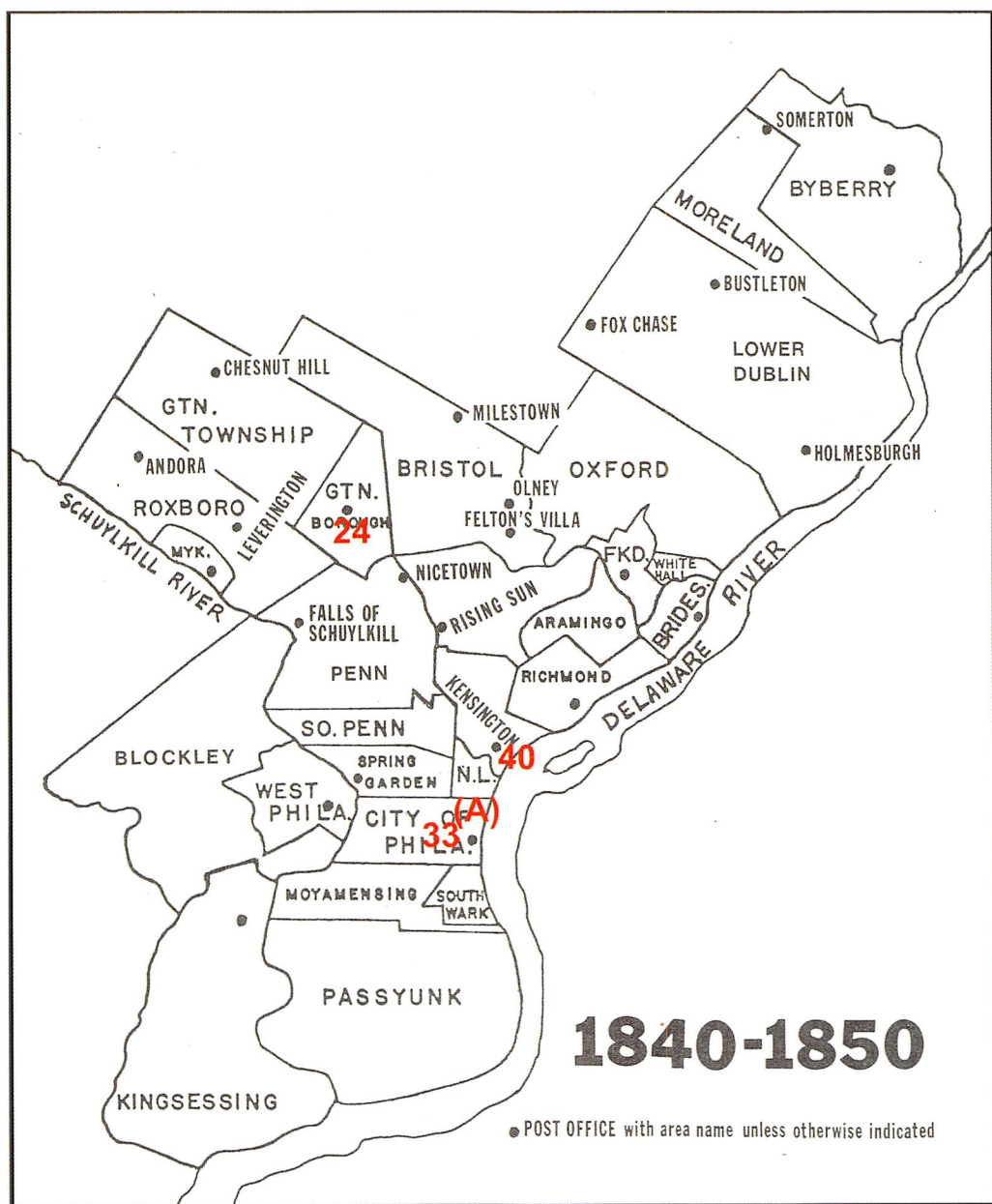


Figure 7. Three 15L8 covers were addressed to within Philadelphia County, only one local door delivery by Blood & Co. in the old city. Map outline from Stets and Kay, 1979.

15L8 ADDRESS		
Total	Location	Census Number
2	Philadelphia old city	33, (A)
16	Pennsylvania	2, 3, 4, 6, 7, 22, 23, 24, 30 35, 36, 39, 40, 41, 48, 49
7	New York, NY	11, 19, 20, 37, 38, 53, 57
6	New Jersey	9, 21, 27, 42, 45, 59
6	Maryland	1, 15, 17, 26, 34, 50
5	Washington D.C.	5, 14, 47, 51, 55
3	Delaware	10, 18, 52
3	Missouri	12, 13, 44
3	Massachusetts	25, 43, 56
2	Virginia	28, 29
1	Connecticut	8
1	Vermont	32
1	Maine	46
1	North Carolina	58
1	Illinois	31
1	Unknown	54
1	ENGLAND	16
60	All Locations	

Table II. Summary of 15L8 address destinations. Of 59 covers, all but one were outbound, 17 remained in Philadelphia county, and only one of which a local door delivery within the city. Parenthesis reserved only when absolute certainty is missing.

15L8 COVERS		
Total	Cover Type	Census Number
48	Folded Letter	1,3,4,5,6,7,8,9,10,11,12,13,14,15,16,17,18,19 20,21,23,24,26,27,28,29,30,31,32,33,34,35,38, 42,43,44,45,48,49,50,51,52,54,55,56,57,58,59
10	Envelope	2,22,25,36,37,39,40,41,46,53
1	Front	47
0	Circular	-
59	All Types	

Table III. Summary of 15L8 cover types. More than 80% were folded letters.

Inbound bootlegged letters handed over to Blood & Co., for local delivery have *not* been identified on 15L8 covers (as 15L7), virtually excluded by the special purpose nature of 15L8 stamp for *outbound* service.^{42,43}

15L8 Cover Type

Table III is a summary of the various cover types bearing a 15L8 stamp. Of the 59 examples, 48 were *folded letters*, representing 81%, such as **Figures 3, 4** and **5**; a small but understandable decrease from the 87% of the preceding 15L7, and reflective of the late 1840's trend toward envelopes.

Only ten of 59 in the data base were envelopes, for 17%; a significant increase from none with 15L7, not a surprise as 15L7 were all 1846, only the second year of commercially available envelopes.

Only one is a *front* only (census number 47). No folded wrappers. Understandably, no business circulars, since they did not generally target business in other cities.⁴⁴

On occasion, Blood & Co. adhesive stamps were employed for a second purpose, to also seal the cover secure. Opening sometimes tore or severed the stamp. Only 2 of the 59, less than 4%, functioned in this manner (census number 14 and 29 respectively). **Figure 8** was prepaid from Rochester, New York on November 20 to Chas Elet in Philadelphia, but returned by Blood & Co. to the Philadelphia post office and forwarded to Wheeling, Va. Another curious example (census number 9) demonstrated at least two remaining quite defective 15L8 stamps of a possible strip of four⁴⁵ on the reverse, appearing to have secured a coin for Blood & Co. to pay the post office for the government intercity rate, **Figure 9**.

15L8 Cancel Types

The data for 15L8 cancels are summarized in **Table IV**. **Most were not cancelled**. Only 11 of 59 covers were cancelled, 18%, consistent with private post outbound service to another city where private post stamp reuse was not a threat. 15L8 was cancelled much less than 15L7, which was 67%.⁴⁶ Ten of the 11 cancelled 15L8 were by a large manuscript "X," generally on center, covering most of the stamp.⁴⁷ Virtually all manuscript "X" cancelled stamps were prior to June 20, 1847, about the same time as the disappearance of 15L5 striding messengers

⁴² Vernon R. Morris, Jr., MD, "Bloods Part 7: 15L7," *The Penny Post*, Vol. 22, No. 3, July 2014, Whole No. 88, page. 38.

⁴³ Vernon R. Morris, Jr., MD, "Bloods Part 6: 15L6," *The Penny Post*, Vol. 22, No. 2, April 2014, Whole No. 87, page. 42.

⁴⁴ Vernon R. Morris, Jr., MD, "Bloods Part 6: 15L6," *The Penny Post*, Vol. 22, No. 2, April 2014, Whole No. 87, page 47, 55.

⁴⁵ Email communication on August 12, 2014 with Norm Shachat

⁴⁶ Vernon R. Morris, Jr., MD, "Bloods Part 6: 15L6," *The Penny Post*, Vol. 22, No. 2, April 2014, Whole No. 87, page. 43, 52.

⁴⁷ Vernon R. Morris, Jr., MD, "Bloods Part 6: 15L6," *The Penny Post*, Vol. 22, No. 2, April 2014, Whole No. 87, page. 58.

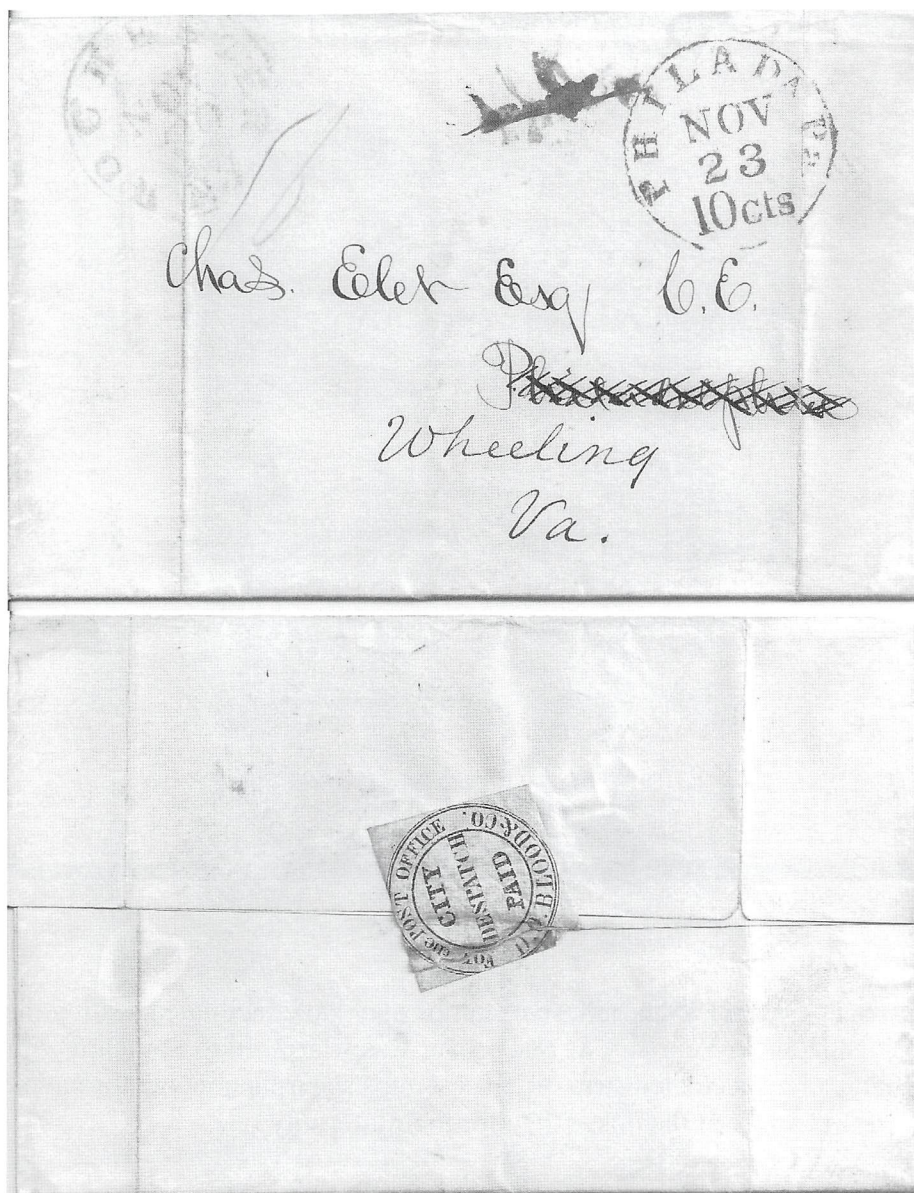


Figure 8. Torn 15L8 cut square on reversed sealed the folded letter which was prepaid from Rochester, NY to Philadelphia. Apparently received by someone knowledgeable of Elet's current location who deposited the letter to Blood & Co. for returned to the Philadelphia post office outbound to a new address in Virginia.



Figure 9. Several 15L8 adhesive stamps may have facilitated sealing their folded letter. A February 8, 1847 cover was addressed to Southard with remnants of a speculated strip of 15L8 stamps securing coinage for payment at the post office for their inter-city rate.

15L8 CANCEL		
Total	Cancel Type	Census Number
10	Manuscript "X"	1, 2, 3, 4, 5, 6, 7, 14, (43), 51
1	(traces of blue)	19
0	Dots or Pen stroke	-
0	red "PAID" handstamp	-
48	Uncancelled	8,9,10,11,12,13,15,16,17,18,20,21,22 23,24,25,26,27,28,29,30,31,32,33,34 35,36,37,38,39,40,41,42,44,45,46,47 48,49,50,52,53,54,55,56,57,58,59
59	Total	

Table IV. Summary of 15L8 cancel types. Less than 20% were cancelled.

15L8 AUXILIARY MARKINGS		
Total	Handstamp Type	Census Number
27	blue Philadelphia (Clarke 71a) cds	6, 8, 9, 10, 15, 16, 17, 18, 21, 22, 23, 24, 26, 27, 28, 30, 34, 35, 36, 39, 40, 41, 42, 48, 49, 50, 52
1	blue Philadelphia (Clarke 71b) cds	7
12	blue Philadelphia (Clarke 79a) cds	10, 12, 13, 16, 25, 29, 31, 36, 43, 44, 46, 47
6	blue Philadelphia (Clarke 70a) cds	1, 2, 3, 4, 5, 14
8	blue PAID in lozenge	9, 13, 16, 26, 31, 43, 48, 51
5	blue Philadelphia (Clarke 430d) cds	19, 32, 37, 38, 45
3	blue indistinct Philadelphia cds	51, 54, 57
1	blue open circle grid	25
2	blue numeral 5 in double circle	37, 38
1	blue numeral 10 in double circle	32
4	red Philadelphia (Clarke 430e) stl	11, 20, 53, 56
2	red New York cds	53, 56
1	red Rochester cds	29
1	red PAID	29
1	blue Baltimore cds	55
1	Boston cds	43
2	Blood's Type 5 Handstamp	9, 33
4	manuscript "5 "	11, 56, 57, 59
2	manuscript "10"	56, 58
1	manuscript "1/-"	16
5	manuscript notation	2, 14, 16, 23, 56
0	None	-
90	All Types (59 covers)	

Table V. Summary of 15L8 auxiliary markings. Each and every cover possessed at least one marking.

cancelled by manuscript “X.”⁴⁸ One 15L8 cancel (census number 19) was merely traces of blue ink.

No “group of dots” cancel were identified. No single line penstroke cancels. No red “PAID” cancels on 15L8; the latest recorded “PAID” cancelled a predecessor 15L7 on May 16, 1846.^{49,50} None were cancelled by red numeral “3,” understandable since 15L8 followed the rate reduction of mid 1846.⁵¹ No grid handstamps either, although they did appear on 15L6 by December 8, 1847.⁵²

15L8 Cover Auxiliary Marking

Auxiliary markings provide additional postal information regarding handling and delivery. In the context of private posts, all markings not intended to prevent reuse of the private post stamp have been considered auxiliary markings, both manuscript and handstamp, government or private. More than one marking may appear on a single cover.

Table V reveals that *all* 59 covers were graced by a total of 90 auxiliary markings. Two markings appeared on each of 24 covers (census number 2, 10, 11, 13, 14, 23, 25, 26, 27, 32, 34, 36, 37, 38, 45, 51, 53, and 57). Three markings appeared on four covers (census number 9, 29, 31, and 43); four markings on one cover (census number 56); and seven markings on one (census number 16), three of which were in England.

By far the *most common* were 59 government circular datestamps, 54 were blue Philadelphia, such as **Figure 3, 4, 5, 8, 9**. Two were red New York cds, (census number 53, 56); one each for Baltimore (census number 55), Boston (census number 43), and Rochester (census number 29).

Two circular handstamp markings were Blood & Co. private post (census number 9 and 33). Blood handstamps on contemporary “striding messenger” stamps were precious few, 4 of 93 covers, *only* 4%.⁵³

Of 11 manuscript auxiliary markings, four were manuscript “5” and two “10” markings.

15L8 Stamp Shape

Since 15L8 was not issued with perforations, manual separation was required from assumed panes or sheets.⁵⁴ **Table VI** is a summary of the various types of 15L8 shapes in the data base. Most common were “cut squares,” 46 of the 59, 75%, shown in **Figure 4, and 8**. “Cut to shape” was a distant second, identified

⁴⁸ Vernon R. Morris, Jr., MD, “Bloods Part 5: 15L5,” *The Penny Post*, Vol. 22, No. 1, January 2014, Whole No. 86, pages 33, 37, 38.

⁴⁹ Vernon R. Morris, Jr., MD, “Bloods Part 6: 15L6,” *The Penny Post*, Vol. 22, No. 2, April 2014, Whole No. 87, page. 43.

⁵⁰ Vernon R. Morris, Jr., MD, “Bloods Part 7: 15L7,” *The Penny Post*, Vol. 22, No. 3, July 2014, Whole No. 88, pages 31, 39, 54.

⁵¹ Vernon R. Morris, Jr., MD, “Bloods Part 7: 15L7,” *The Penny Post*, Vol. 22, No. 3, July 2014, Whole No. 88, pages 31, 47, 48, 49, 50, 51, 53, 54.

⁵² Vernon R. Morris, Jr., MD, “Bloods Part 6: 15L6,” *The Penny Post*, Vol. 22, No. 2, April 2014, Whole No. 87, pages 32, 43, 45, 63.

⁵³ 15L5 census numbers 12, 15, and 37; 15L6 census number 11.

⁵⁴ Robert Siegel Auction Galleries sale 1063 December 19-20, 2013 lot 1728.

on 10 of 59 covers, for 17%, demonstrated in **Figure 3**, and **5**. Only 3 examples, 8%, were “cut to octagon,” shown in **Figure 10** (census number 24).

No 15L8 were “partially cut to shape,” a hybrid of two categories which has been identified on a few 15L7 covers.⁵⁵ All “striding messenger” stamps were imperforate, and easily separated by the efficient cut square technique. The very different double circle design, however, was more suitable for several stamp separating options including fashionable “cut to shape” or “cut to octagon” varieties. The most efficient method for 15L7 would also be cut squares, assumed to be the method of choice by “wholesaler” Blood & Co., and perhaps their various business stations. Patrons could also purchase large volumes directly from the Blood’s office at a discount, and fashion stamp separation to their liking. Blood & Co. was accordingly able to offset some of the volume price reduction by labor cost savings, not having to divide the stamps into singles.⁵⁶

15L8 STAMP SHAPE		
Total	Cancel Shape	Census Number
46 10 3 0 59	Cut Square	2,3,4,5,8,9,11,12,14,15,16,17,18, 19,20,21,22,23,25,26,28,29,30,31, 32,34,35,37,38,39,40,41,42,43,44, 45,49,50,51,53,54,55,56,57,58,59
	Cut to Shape	1,6,7,13,27,33,36,46,47,52
	Cut to Octagon	10, 24, 48
	Partially Cut to Shape	-
All Types		

Table VI. 15L8 has been identified in several stamp shapes.

15L8 Tied to Cover

Table VII revealed that *only 18%* of 15L8 stamps were tied to their cover, 11 of 59, *typically by government cds*. Eight of 11 tied, or 73% of tied examples, were by government markings, as shown in **Figure 4**, and **10** (census number 8 and 24 respectively). One was tied by two different forms of markings, both handstamp and manuscript (census number 16). None of the 10 cancelled by manuscript “X” tied the stamp to cover.

⁵⁵ Vernon R. Morris, Jr., MD, “Bloods Part 7: 15L7,” *The Penny Post*, Vol. 22, No. 3, July 2014, Whole No. 88, pages 31, 32, 42, 60.

⁵⁶ Vernon R. Morris, Jr., MD, “Bloods Part 7: 15L7,” *The Penny Post*, Vol. 22, No. 3, July 2014, Whole No. 88, page 42.

15L8 TIED to COVER		
Total	Marking Type	Census Number
7	blue Philadelphia CDS	8, 10, 15, 16, 24, 35, 36
1	blue Philadelphia PAID in lozenge	13
1	blue open circle grid	25
1	blue Baltimore cds	55
1	red PHILADA RAILROAD straight line	56
1	manuscript "1/-" shilling due	16
12	All Types (11 covers)	

Table VII. Less than 20% of 15L8 were tied to their cover.

15L8 Correspondence

In any philatelic census more than one letter may have been sent to the same person or address. Five persons received more than one letter bearing a 15L8 stamp. Commodore **Warrington** (census number 5 and 14) resided in Washington D.C., shown in **Figure 11**. Lewis Warrington was Chief of Bureau of Ordnance and Hydrography 1849.⁵⁷

Franklin **Dick** (census number 12 and 13) lived in St. Louis.⁵⁸ Mssrs. **Stickney** and Beatty (census number 17 and 34) was a company in Baltimore, Maryland. Mrs. **McBlair** (census number 43 and 56) was believed to be in New Port, Rhode Island, although the cover was rerouted to Boston. Both were to the care of Liepert McBlair, **Figure 12**. Charley **Pitt** (census number 1 and 50) resided in Baltimore.

15L8 Valentines

Only one example in the 15L8 data base contained a valentine (census number 35), **Figure 13**, dated February 13th, with 1848 more likely than 1847. The valentine *enclosure* was a watercolor with poem, **Figure 14**. Dr. Isaac Walker was born in 1817, studied medicine at the University of Pennsylvania, was in practice during the 1840's and 1850's and maintained an office on Lancaster Pike. He was an executive commissioner of the Chester County Agricultural Society, and died in 1860.⁵⁹

The Dr. Walker example may be an exception to the author's recently proposed "distant romances" were too few and far away for valentines to other cities.⁶⁰ However, the village of "Spread Eagle" was not distant, and located in modern suburban Philadelphia.

⁵⁷ The Washington Directory and National Register for 1846 listed Lewis Warrington at south side Penn avenue between 17 and 18 west.

⁵⁸ Born and died in Philadelphia in 1823 and 1885 respectively, he attended the University of Pennsylvania in 1839 to study law. Upon graduation in 1842 Franklin moved to St. Louis.

⁵⁹ <http://www.tehistory.org/hqda/html/v26/v26n2p069.html>

⁶⁰ Vernon R. Morris, Jr., MD, "Bloods Part 7: 15L7," *The Penny Post*, Vol. 22, No. 3, July 2014, Whole No. 88, page 44.



Figure 10. 15L8 stamp “cut to octagon” on October 14, (1847), was tied to the folded letter by a blue Philadelphia cds.



Figure 11. Two covers were addressed to Commodore Warrington in Washington D.C.



Figure 12. Two covers were addressed to Mrs. McBlair. Originating with Blood & Co. in Philadelphia, this example entered inter-city mail at New York. It was addressed to Newport, RI, but redirected for a second 5 cent rate to Boston.



Figure 13. The only valentine with 15L8 on folded letter was a February 13, (1847-8) addressed to present day suburban Philadelphia, but entered the government mail per usual confirmed and tied by blue Philadelphia cds.



Figure 14. The one 15L8 valentine of February 13, (1847-8) watercolor image with poem enclosure.

15L8 Blood Advertising Labels

The data base of 59 covers with 15L8 stamp identified only two labels (census number 33 and 42), about 3%. Since colorful Blood & Co. advertising labels did not make their appearance until July 1847,⁶¹ only 45 of the data base were combination candidates.

15L8 Government Combinations

General issue government stamps in combination with 15L8 were not possible, of course, until July 1, 1847, the first day of issue for government prepayment stamps. The first 14 covers in the 15L8 data base predate July 1, 1847. Therefore, only 45 of the 59 examples in **Table 1** are candidates for Blood & Co. combination with government prepaid stamps. Four combination examples have been identified (census number 25, 26, 31, and 45), for almost 6% of the full data, or 9% of the candidates.

All four examples prepay the government inter-city rate with 5 cent 1847 stamps, *Scott Catalog* #1.⁶² No Scott #2 ten cent stamps were employed. Two distant destinations (census number 25 and 31), however, required the ten cent rate, each paid by two 5 cent stamps. Addressed to Boston (census number 25) two individual 1847 stamps were each tied to the 15L8 and cover, shown in **Figure 15**. Addressed to Illinois (census number 31) was a vertical pair tied to the cover, **Figure 16**.

15L8 Transatlantic

As a new topic for the series, **Table I** identified one example addressed to England (census number 16). Shown in **Figure 17**, the 15L8 stamp was tied to the cover by both two strikes of a blue July 27 / Philadelphia cds., and also the manuscript “1/-“ shilling *due* in England. Liverpool and Manchester circular handstamps on the reverse confirm the 1847 year date. July 27, 1847 is the **earliest recorded transatlantic cover bearing any type of Blood & Co. adhesive stamp**. Seven auxiliary markings are present.

Outbound Letters

During the previous one hundred years the Philadelphia post office had provided *organized* carrier service, but for only door delivery of *inbound* letters. Not until February 1849, did the carrier departments of several large cities including Philadelphia reorganize and issue “carrier department stamps,” to facilitate collection of letters given to a carrier while on his route.⁶³ Not until 1851 did the carrier department in Philadelphia proposed collection *boxes* throughout the old city,

⁶¹ Vernon R. Morris, Jr., MD, “Bloods Part 5: 15L5,” *The Penny Post*, Vol. 22, No. 1, January 2014, Whole No. 86, page 34.

⁶² *Scott 2012 Specialized Catalogue of United States Stamps & Covers, Nineteenth Edition*, Scott Publishing Co., 2011, Sidney Ohio, page 6.

⁶³ Vernon R. Morris Jr., MD, “What is a ‘Drop Letter’ and a ‘Drop Dead Letter’?,” *The Chronicle of the U.S. Classics Postal Issues*, Vol. 55, No. 4, Whole Number 200, November 2003, pages 252, 253.



Figure 15. Two 5 cent 1847 stamps each tied to 15L8 and cover satisfied the 10 government rate to Boston on October 15, 1847. Courtesy Charles Shreve.

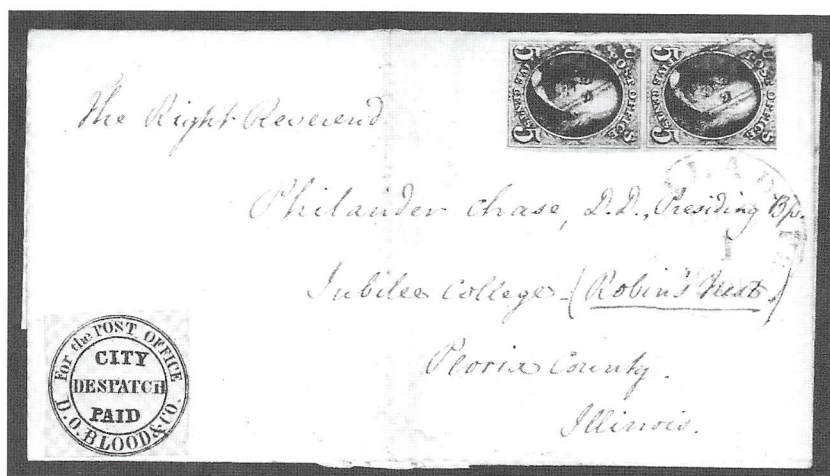


Figure 16. A 5 cent 1847 vertical pair satisfied the 10 government rate to Illinois, tied by blue Philadelphia December 1 cds on 1847 folded letter with uncanceled 15L8.



Figure 17. The earliest recorded transatlantic cover with Blood & Co. stamp of any type was an uncanceled 15L8 tied by blue Philadelphia cds and shilling marking on July 27, 1847 folded letter addressed to England. Dated English handstamps on reverse are attached at bottom.

but not likely implemented for several years.⁶⁴ Blood & Co. was many years ahead of the lagging local government postal service.

Evidence based data reveals that 58 of 59 covers with 15L8 were addressed outside of the old city of Philadelphia, and had entered the government inter-city mail system. For the **combined 15L7 and 15L8 data, only 1 of 83 was a local door delivery, just over 1%.** The sole example was a 15L8 (census number 33), shown in **Figure 18**; most likely a rare miscue by Blood & Co. on December 18, 1847, providing a more expensive city letter service although inadequately compensated by a post office stamp. The addressee is "J J Mickley," shown in **Figure 19**, an interesting pioneer in the collectibles field.

⁶⁴ Vernon R. Morris Jr, MD, "What is a 'Drop Letter' and a 'Drop Dead Letter'?", *The Chronicle of the U.S. Classics Postal Issues*, Vol. 55, No. 4, Whole Number 200, November 2003, pages 254, 255.

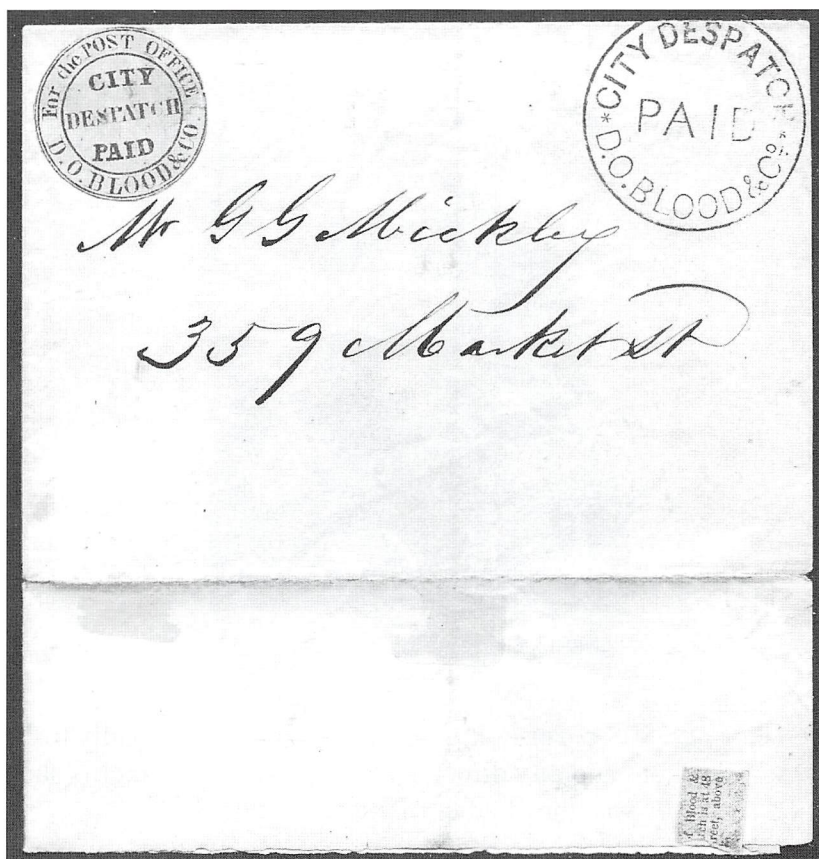


Figure 18. The one 15L8 cover delivered to local door address (incorrectly), one of only two with Blood advertising label, and one of only two with Blood & Co. handstamp, was on December 18, 1847

Joseph Jacob Mickley was born in 1799 near Allentown and moved to Philadelphia in 1818 to apprentice in repair of pianos and violins.⁶⁵ In 1831 he received a prize from the Franklin Institute for his skills.⁶⁶ As a pioneering numismatist, he was a regular visitor to the U.S. Mint in Philadelphia, whose curator named him as the “Father of American Numismatics.” He went on to be the first president of the Numismatic and Antiquarian Society of Philadelphia in 1857. Ten years later he became an honorary member of the American Numismatic and Archeological Society (later the American Numismatic Society).⁶⁷ From 1869 to 1872 Mickley visited every mint in Europe gathering coins. He was fluent in French, German, Swedish, and familiar with Italian, Spanish, and Russian. In 1878, Mickley died in Philadelphia.

⁶⁵ <https://sites.google.com/site/numismaticmallcom/encyclopedic-dictionary-of-numismatic-biographies/mickley->

⁶⁶ <http://www2.hsp.org/collections/manuscripts/m/Mickley0647.html>

⁶⁷ <http://numismatics.org/Archives/Bio-jmickley>



MICKLEY JOSEPH J., pianomr., 359 High

Figure 19. The 15L8 cover in Figure 18 was addressed locally to Joseph Mickley, whose photo and city directory listing as piano-maker is shown. He was the “Father of Numismatics”.

Mickley is no stranger to the *Penny Post*.⁶⁸ Two months earlier an October 27, 1847 city letter with 15L5 stamp (census number 34) was addressed to “Mr J Mickley.”

15L8 Volume – Time Analysis

The earliest recorded 15L8 was December 23, 1846. The latest *date certain* was July 21, 1848. The *conservative* philatelic lifespan estimate for 15L8 is 19 months, during which time 41 covers have been identified (census numbers 1-40 and 52), with corresponding activity of 2.16 covers per month.

The *liberal* philatelic lifespan estimate for 15L8 is 24.2 months, until the end of 1848. Clarke Type dating of Type 71a and 79a (latest September 21, 1848 and November 30, 1848 respectively)⁶⁹ are found on most of the remaining uncertain years (census numbers 41-51). Activity during the liberal period of 52 covers was 2.15 covers per month!

Whereas 7 un-datable, possible far outliers, were not incorporated into the calculations, both the conservative and liberal calculations were virtually identical. The *conservative estimate has been selected* for its *greater date specificity*. The

⁶⁸ Vernon R. Morris, Jr., MD, “Bloods Part 5: 15L5,” *The Penny Post*, Vol. 22, No. 1, January 2014, Whole No. 86, pages 26, 56, 57.

⁶⁹ Tom Clarke, *A Catalog of PHILADELPHIA POSTMARKS, 18th Century to Present, Part II, Interim Listing*; 2012, Clarke, page 24.

15L8 estimate of 2.16 surviving covers per month is also very consistent with the immediately preceding 15L7 issue at 2.09 covers per month,⁷⁰ as might be expected for a continuum of special purpose stamp types. **Figure 20** graphically demonstrates the striking similarity.

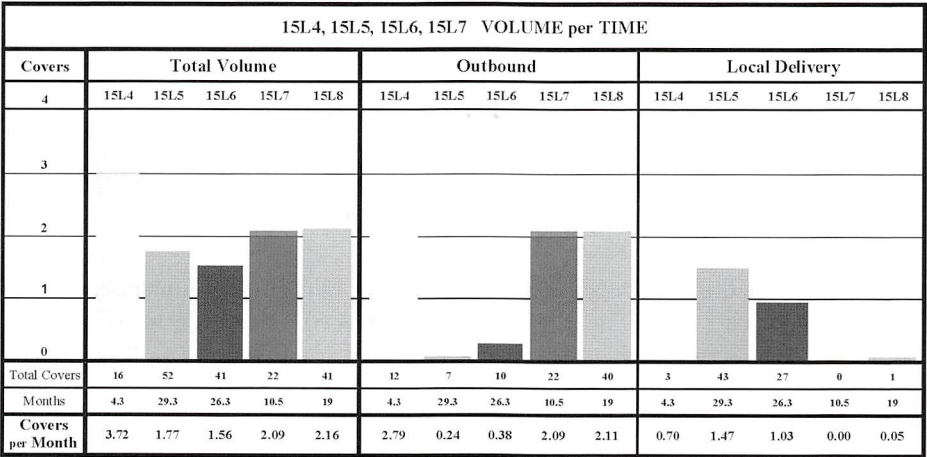


Figure 20. Graphic demonstration of Blood & Co. activity in terms of surviving covers per month.

Since 15L8 overlapped many other Blood & Co. stamp issues, such as 15L5 and 15L6, *no 15L8 exclusive* philatelic time period existed, **Figure 6**. Blood & Co. appears to have transitioned from selling 15L7 to 15L8 in mid-December 1847. The evidence gathered thus far, however, leaves a breach of two weeks, from December 7, (1846) until December 23, (1846),⁷¹ (excluding two 15L7 *far* outliers in later years), which may be eventually eliminated with additional data.

In an earlier article the 15L5 “philatelic exclusive period” was initially considered from December 16, 1845 until March 12, 1846 lasting 12 weeks.^{72,73} Following the discovery of an earlier 15L7 on January 24, 1846, the exclusive 15L5 period had been reduced to only five weeks.⁷⁴ Revised further again herein, a second narrow 15L5 philatelic exclusive period has been determined at the end of December 1846.

⁷⁰ Vernon R. Morris, Jr., MD, “Bloods Part 7: 15L7,” *The Penny Post*, Vol. 22, No. 3, July 2014, Whole No. 88, pages 44, 45, 46.

⁷¹ Vernon R. Morris, Jr., MD, “Bloods Part 7: 15L7,” *The Penny Post*, Vol. 22, No. 3, July 2014, Whole No. 88, pages 33, 35, 36, 44, 45, 46.

⁷² Vernon R. Morris, Jr., MD, “Bloods Part 5: 15L5,” *The Penny Post*, Vol. 22, No. 1, January 2014, Whole No. 86, pages 30, 31, 37, 44.

⁷³ Vernon R. Morris, Jr., MD, “Bloods Part 6: 15L6,” *The Penny Post*, Vol. 22, No. 2, April 2014, Whole No. 87, pages 41, 58, 59.

⁷⁴ Vernon R. Morris, Jr., MD, “Bloods Part 7: 15L7,” *The Penny Post*, Vol. 22, No. 3, July 2014, Whole No. 88, pages 35, 36, 46.

15L8 Demonstration Samples on Printed Circular

Although business circulars had been encouraged by Blood & Co., none bear a 15L8 stamp. The reason was simple; 15L8 was a less expensive stamp that did not cover the more involved and expensive local door delivery service. Nevertheless, **Table I** 15L8 data has included although sequestered two special circulars, each of which demonstrated *sample* stamps not intended for postal service. Both were Blood & Co. *self* advertising, with comparison of service type options and charges! The 15L7 data base included four similar circulars.⁷⁵

Each one is a Type II circular which provided space across the middle to enter a retail business name or location.⁷⁶ Only one (census letter A) may have been delivered by a Blood postman, suggested by the pencil manuscript address, the likely posted location. The other (census B) was probably an un-posted unused remainder.

The printed side of each demonstrated the two current uncanceled prepaid stamps, 15L8 and 15L5. These circulars announced and advertised the **special purpose** for each stamp type: an unused 15L5 “striding messenger” example was entitled “CITY STAMP;” a “double circle” unused 15L8 example titled “POST-OFFICE STAMP.”⁷⁷ Since all circulars promoted a 15L5 stamp, they likely originated before the mid 1847 appearance of 15L6. Likewise, each circular promoted a 15L8 stamp, and probably originated *after* termination of 15L7, but not before the very end of 1846. Therefore, the two surviving 15L8 circulars probably hale from the *first six months of 1847*.

1846 Rate Reduction

Blood & Co. prepaid stamps were non-denominated, but service type specific. Neither “striding messenger” *city stamps*, nor double circle *post office stamps* specified a monetary value. Ever since 1842 single service was 3 cents, either collect or by prepaid stamp, but **was reduced mid-1846 to 2 cents**.⁷⁸ All recorded 15L8 evidence is at least six months or more following this private post rate milestone. 15L8 stamps were never more than 2 cents retail per single stamp, as advertised by July 14, 1846 in the newspapers.⁷⁹ Furthermore, one hundred post office stamps were only 75 cents, or $\frac{3}{4}$ cent each; a 63% “*wholesale*” discount from the retail charge!

Theory

Within six months of their July 1, 1845 founding, D.O. Blood & Co. had formally *bifurcated their business model*, subdivided and specialized their private

⁷⁵ Vernon R. Morris, Jr., MD, “Bloods Part 7: 15L7,” *The Penny Post*, Vol. 22, No. 3, July 2014, Whole No. 88, pages 34, 48, 49, 56, 57.

⁷⁶ Vernon R. Morris, Jr., MD, “Bloods Part 7: 15L7,” *The Penny Post*, Vol. 22, No. 3, July 2014, Whole No. 88, page 49.

⁷⁷ Vernon R. Morris, Jr., MD, “Bloods Part 7: 15L7,” *The Penny Post*, Vol. 22, No. 3, July 2014, Whole No. 88, page 50.

⁷⁸ Vernon R. Morris, Jr., MD, “Bloods Part 7: 15L7,” *The Penny Post*, Vol. 22, No. 3, July 2014, Whole No. 88, pages 47-51.

⁷⁹ Vernon R. Morris, Jr., MD, “Bloods Part 7: 15L7,” *The Penny Post*, Vol. 22, No. 3, July 2014, Whole No. 88, pages 48, 49.

postal services into city letters and post office letters. 15L7 was the world's first explicit "special purpose" adhesive stamp, "**For the POST OFFICE**" arched across the top of the stamp design proclaiming its role and function! The **world's second special purpose stamp was 15L8**. Evidence based data confirms that *all* 15L7 full covers,⁸⁰ and with one exception *all* 15L8 covers were transported to the Philadelphia post office for outbound government mail.

For a long time a need had existed in Philadelphia for better organized transportation of letters "to the post office," a service not conveniently provided by the government, or any other private company. Blood predecessor Philadelphia Despatch Post was the first in Philadelphia to do so. By December 8, 1842,⁸¹ 70 "letter box" stations were located throughout the old city,⁸² to *facilitate* collection and delivery of outbound letters to the post office, documented as early as April 19, 1843.⁸³ Only red 15L1, and no black 15L2 stamps, serviced letters to the post office for outbound mail, perhaps the *precursor* mechanism by different *stamp color* to distinguish or earmark outbound service.⁸⁴ By 1846, *Blood & Co. developed this concept further by producing an explicit stamp design, in addition to cheaper cost, for outbound letters.*

15L8 Summary

In early 1846 Blood & Co. had developed a *bifurcated business model employing two types of complementary postal service*. City stamps were sold for local door delivery and post office stamps for outbound letters. At the time city stamps were square pictorial "striding messengers" already having been sold for several years, but soon being reserved for local delivery. Blood & Co. created post office stamps with an entirely different round geometrical design, for easy delivery across the street to the Philadelphia post office in the Merchants Exchange building for outbound government mail.

City stamps serviced city letters, which included a very involved third step delivery to thousands of local addresses. Post office stamps serviced outbound letters, a less expensive essentially *two-step* process as all were simply delivered to one location, directly across Third Street.⁸⁵ For a few years Blood & Co. was the only private post or world government to provide a less expensive outbound letter service, for which Blood & Co. even *passed the savings on to the public*.⁸⁶ *The first*

⁸⁰ Vernon R. Morris, Jr., MD, "Bloods Part 7: 15L7," *The Penny Post*, Vol. 22, No. 3, July 2014, Whole No. 88, pages 47-51.

⁸¹ Vernon R. Morris, Jr., MD, "Bloods Part 1: 15L2," *The Penny Post*, Vol. 82, No. 1, January 2013, Whole No. 82, page 27.

⁸² Vernon R. Morris, Jr., MD, "Bloods Part 3: 15L3," *The Penny Post*, Vol. 21, No. 3, July 2013, Whole No. 84, pages 37, 38.

⁸³ Vernon R. Morris, Jr., MD, "Bloods Part 1: 15L2," *The Penny Post*, Vol. 82, No. 1, January 2013, Whole No. 82, pages 55, 59, 60, 61.

⁸⁴ Vernon R. Morris, Jr., MD, "Bloods Part 1: 15L2," *The Penny Post*, Vol. 82, No. 1, January 2013, Whole No. 82, pages 59, 60.

⁸⁵ Vernon R. Morris, Jr., MD, "Bloods Part 6: 15L6," *The Penny Post*, Vol. 22, No. 2, April 2014, Whole No. 87, pages 50, 52.

⁸⁶ Boyds City Express Post in New York used the same stamp at the same price while almost half of their business was outbound.

post office stamp was **15L7** in early 1846, and replaced by the very end of 1846 with **15L8**. They were the first and second “special purpose” stamps in the world! The stamp design had been modified to remove “POST” from its center, as if too bold or offensive to the receiving Philadelphia *post* office. A prudent business would be properly sensitive to public opinion and potential competitor criticism.

Six months prior to the introduction of 15L8, Blood & Co. had reduced the **single service from three to two cents**, either collect or prepaid. The impetus may have been driven by the appearance of several new local posts which were likely attracted by the lucrative 3 cent service, at a time when intercity mail was only 5 cents up to 300 *miles*! Volume discounts had been promoted for many years. Following the mid-1846 Blood & Co. rate reduction, one dozen 2 cent city stamps could be purchased for 20 cents, and one dozen post office stamps for only 12 cents, just 1 cent each, a bifurcated system with appropriate cost differential for service type. **The first one cent postal service in the United States of America.** Furthermore, one hundred post office stamps were only 75 cents, an incredible $\frac{3}{4}$ cent each! Blood & Co. was indeed an aggressive competitor, with ambition and innovation.

The profound stamp design difference between pictorial and geometric was a *conspicuous mechanism* to readily distinguish between service type and cost structure. This mechanism assisted Blood & Co. from incorrectly providing a greater service than paid for. The evidence has revealed better fiscal compliance by Blood & Co. than consumer. 18% of the more expensive city stamps were mistakenly applied by the consumer for a less costly outbound service (expedience, convenience, or ignorance).^{87,88} To the contrary, incorrect Blood & Co. servicing a less expensive post office stamp for a more costly city door delivery was exceedingly low. No 15L7 stamps, and only one 15L8, were local delivery.⁸⁹ *Together, only 1 of 82 covers was an incorrect stamp for Philadelphia door delivery, just over 1%!*

15L8 evidence based data identified 59 full covers. Attached but separate within **Table 1** are 2 circulars which demonstrate *sample* stamps: double circle 15L8 “POST OFFICE STAMP” and “striding messenger” 15L5 “CITY STAMP.”

The earliest recorded 15L8 is an untied December 23, 1846 cover, while the first tied example wasn’t until February 13, 1847. The latest recorded *date certain* cover was July 21, 1848. The *conservative philatelic* lifespan may be considered **from December 23, 1846 until Jul 21, 1848, 19 months**, during which time 41 covers have been identified, for a volume per month of 2.16. The *liberal* philatelic lifespan estimate for 15L8 is 24.2 months, perhaps until the end of 1848, during which period 52 covers for an almost identical rate of 2.15 covers per month! With either analysis the volume per month was virtually identical.

⁸⁷ Vernon R. Morris, Jr., MD, “Bloods Part 5: 15L5,” *The Penny Post*, Vol. 22, No. 1, January 2014, Whole No. 86, pages 31, 32, 38.

⁸⁸ Vernon R. Morris, Jr., MD, “Bloods Part 6: 15L6,” *The Penny Post*, Vol. 22, No. 2, April 2014, Whole No. 87, page 42.

⁸⁹ Vernon R. Morris, Jr., MD, “Bloods Part 7: 15L7,” *The Penny Post*, Vol. 22, No. 3, July 2014, Whole No. 88, pages 37, 54, 57.

The evidence confirms that virtually all 15L8 covers, **98.5% were outbound letters**, consistent with the stamp design specified “For the POST OFFICE,” the world’s second special purpose stamp. A letter destined for Europe has been identified; **the first transatlantic Blood cover is July 27, 1847**. Four covers displayed a combination of 15L8 and 1847 government issued prepaid stamps, all bearing *Scott* #1 only.

Only 20% of the covers were envelopes. **Less than 20% were cancelled, largely by manuscript “X”** (down from 64% of 15L7 data),⁹⁰ but none of which tied 15L8 to its cover. Two long pen-strokes crossing each other covered most of the stamp, much like recent 15L7 and 15L4 examples. The latest recorded date certain manuscript “X” on 15L8 was June 20, 1847 (shortly prior to the last 15L5 cancelled by “X” on November 11, 1847),⁹¹ whereas the latest date certain manuscript “X” cancelled was 15L6 on February 9, 1848.⁹² Reuse of a private post stamp in another city was not a material issue for Blood & Co.

Less than **20% of 15L8 were tied** to its cover, invariably by the *federal marking* rather than a Blood & Co. marking. Since virtually all 15L8 covers entered the intercity mail stream, it should come as no surprise that **100% display an auxiliary marking**.

This series of articles is a work in progress, not infrequently fine tuning and adjusting earlier observations. In this issue, further clarification of an esoteric concept of “philatelic exclusivity” periods were determined.

The predecessor company, The Philadelphia Despatch Post, was the only private post in the United States during all of 1843 and the first half of 1844. Before being sold to Daniel Blood on July 1, 1845 this historic company had created the world’s first pictorial stamp, the 15L3 “striding messenger.” Innovation did not end with the sale to Blood. Within six months, by early 1846, Blood & Co. created the world’s first explicit special purpose stamp, 15L7, with a profoundly different geometrical stamp design. Blood & Co. adopted a **new paradigm with a bifurcated business model**, clearly separating their postal service into two branches. By the end of 1846 Blood & Co. created 15L8, **the world’s second special purpose stamp** by eliminating the large words “POST” from the center. Perhaps private company discretion as virtually all were delivered across the street to the federal government at the Philadelphia POST office. Blood & Co.’s network of collection boxes throughout the old city was much more organized and sophisticated than what the government was offering the public. **Blood & Co. was simply more convenient and cheaper.**

⁹⁰ Vernon R. Morris, Jr., MD, “Bloods Part 7: 15L7,” *The Penny Post*, Vol. 22, No. 3, July 2014, Whole No. 88, pages 38, 54.

⁹¹ Vernon R. Morris, Jr., MD, “Bloods Part 5: 15L5,” *The Penny Post*, Vol. 22, No. 1, January 2014, Whole No. 86, pages 38, 56.

⁹² Vernon R. Morris, Jr., MD, “Bloods Part 6: 15L6,” *The Penny Post*, Vol. 22, No. 2, April 2014, Whole No. 87, pages 43, 55, 58, 60.

NOTE: \$5,000,000 IS ALWAYS AVAILABLE FOR PURCHASE OR CASH ADVANCE FOR AUCTION CONSIGNMENTS.

Call Us Today Toll Free: 877-316-2895



Kelleher Auctions

Daniel F. Kelleher Auctions, LLC

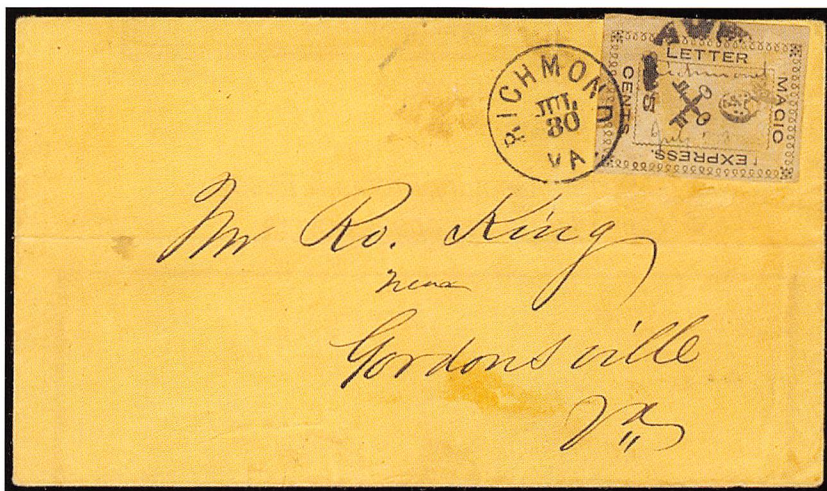
60 Newtown Road. • PMB #44 • Danbury, CT 06810 USA
+203.297.6056 • Fax: +203.297.6059

info@kelleherauctions.com

www.kelleherauctions.com



THE FINEST COLLECTIONS ARE BUILT
WITH PASSION AND PRECISION



Please visit our website at:
www.rumseyauctions.com

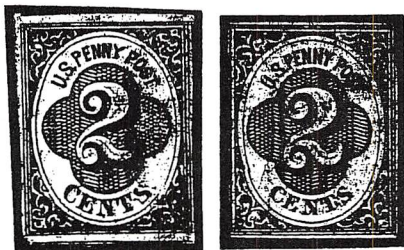
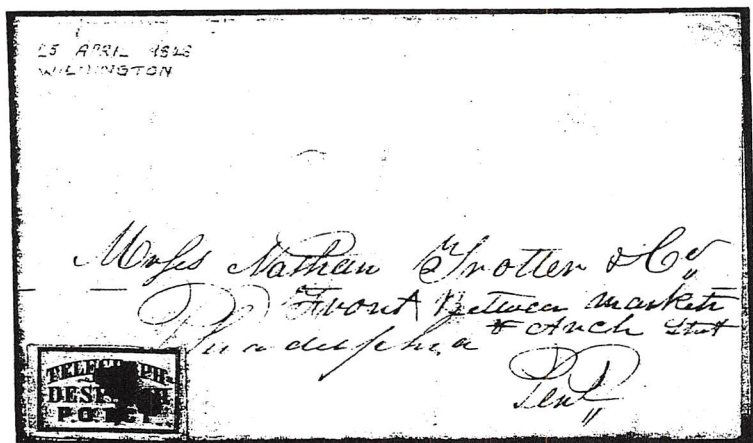
email: srumsey@rumseyauctions.com

Schuyler
Rumsey
Philatelic
Auctions

47 Kearny Street
San Francisco
California 94108
t: 415-781-5127
f: 415-781-5128

Buying, Selling & Appraisals

- ★ Classic U.S. Stamps & Postal History
- ★ U.S. 19th Century Proofs & Essays
- ★ Confederate Stamps & Covers



STANLEY M. PILLER

800 S. Broadway • Walnut Creek, CA 94596

Phone (925) 938-8290

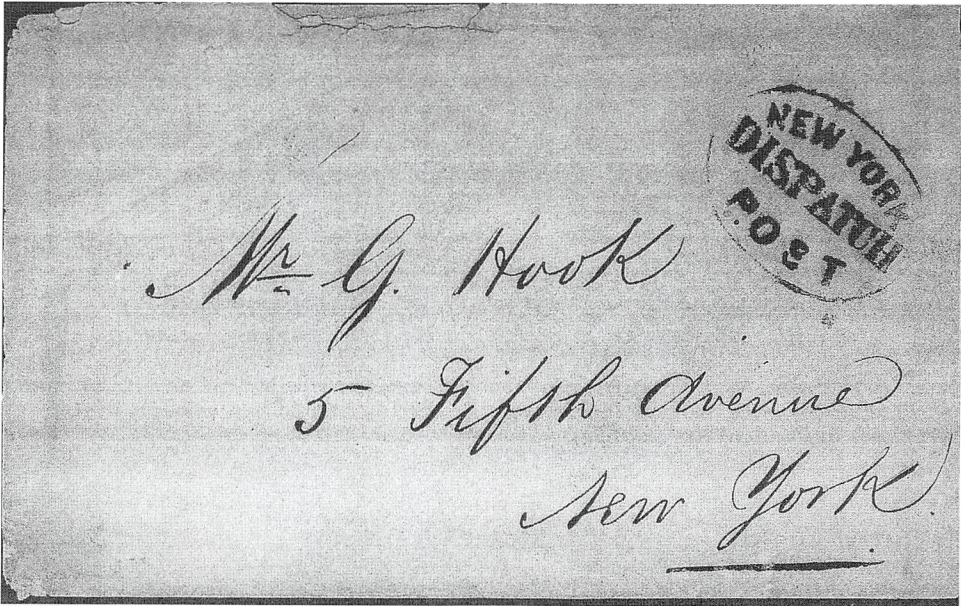
Fax (925) 938-8812

Email: stmpdlr@aol.com

New York Dispatch Post

By
Larry Lyons

This handstamp has been around a long time and has been recognized as genuine by most scholars in the field of local posts. It was in the collections of Abt, Richardson and Hahn. It should be listed in the *American Stampless Cover Catalog*. There is only one recorded example. Calvet Hahn dated the marking to ca. 1857.

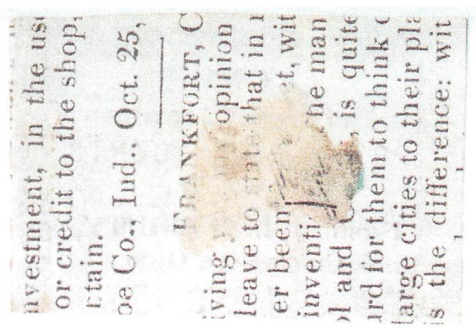
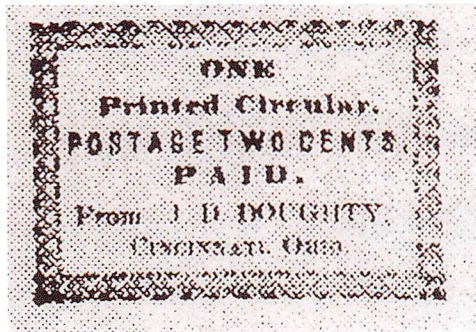


New York Dispatch Post handstamp on a locally delivered cover. This genuine handstamp should be listed in the *American Stampless Cover Catalog*.

J.D. Doughty

By
Larry Lyons

This has long been accepted as a genuine printed corner. It has appeared in the collections of Ferrari and Caspary. As far as I know it has not appeared in the literature. This is from Cincinnati, Ohio and one circular is dated January 14, 1847. There are two types. One has “POSTAGE TWO CENTS. | PAID.” printed in the ornate rectangle and the second type says “POSTAGE _____ CENTS. | PAID.” In which a “3” has been written in manuscript. There may be a third type with “POSTAGE 3 CTS. | PAID.” The last is date circa 1850 and was sent to Versailles, Ohio.¹ No picture was included in the auction description.



Circular on back

Two printed corners of J.D. Doughty. The bottom one is in the John Bowman collection. The scan of the back of the printed corner is compliments of John Bowman.

¹ John Fox, January 4, 1966, Lot 84.

Unreported Eagle City Post Handstamp

By
John D. Bowman

William Stait, formerly of the American Letter Mail Company, established the Eagle City Despatch Post in 1845 and was loosely connected with Adam's Express Company.¹ The handstamps have been described and listed by Stimmell in 1991.² An additional handstamp has appeared on an outer folded letter (**Figure 1**). The handstamp is inscribed "STAIT'S DESPATCH/ADAMS/EXPRESS/One Cent/(flourish?)." The "One Cent" is in a script typeface.



Figure 1. Unreported "One Cent" handstamp of Eagle City/Stait's Despatch.



¹ Gordon Stimmell, Eagle City Post and Stait's Despatch, *The Penny Post*, Vol. 1, No. 2, April 1991, pages 4-8.

² Gordon Stimmell, The Postmarks 1845-55, *The Penny Post*, Vol. 1, No. 2, April 1991, pages 10-11.

Eagle City Post and Stait's Despatch An Update

By
Larry Lyons

The article on which this update is based was written by Gordon Stimmell in April 1991.¹ The intent of this article is to use the auction records which included 24 years of further information to update the handstamp types as to known dates of use and provide an insight into the rarity of these handstamps. My personal records on these posts include 800 pages of auction catalogue extractions which contain about 1800 lots. Excluding duplication there are easily 1000 recorded covers which would represent the delivery of approximately 200,000 letters, notices and reports.

A Brief History

The Eagle City Despatch Post began in the summer of 1845 just after the shutdown of the Independent Mail Companies. The company was conceived by William B. Stait, a former employee of the American Mail Company. According to Robson Lowe, Stait also worked for Adams' Express "who supplemented their express business by running the Eagle City Despatch Post."² Gordon Stimmell interestingly noted that the name of the post and an eagle depicted on the first handstamp "is strongly reminiscent of the eagle depicted on 5L1-except the eagle faces left on Stait's handstamp." The arrangement with Adams was for letters originating in either Philadelphia or from towns served by Adams' Express, to be delivered with Adams receiving his fee on the inter-city mail while Stait got his fee on the intra-city business.

Rates

The rate was three cents for letters on which postage had to be collected from the recipient and two cents if prepaid by either cash or beginning in 1846 by an adhesive stamp. The collect rate was dropped to two cents in early 1849. A one-cent circular rate is known circa 1850. (See the one-cent handstamp discovery in John Bowman's article.) There are also signs of a two-cent rate in 1846 and a three-cent rate in 1851. Special messenger service was five cents. Cal Hahn attributed the five cent extra charge for "up-river" service. **The rates indicated on the handstamps are collect.**

Name Change

The Eagle City Despatch changed to Eagle City Post and finally to Eagle Post. The name changed to Stait's Despatch in late 1851. This was most probably done as a result of the U.S. Carrier Service using an eagle carrier stamp.³

¹ *Eagle City Post and Stait's Despatch*, Gordon Stimmell, *The Penny Post*, Vol. 1, No. 2 April 1991, pages 4-11.

² *Philadelphia Local Posts*, Robson Lowe, Interphil Special Issue of *The Chronicle*, May 1976, page 89.

³ Elliott Perry, unpublished manuscript on Eagle City Post and Stait's Despatch contained in the Richard Schwartz library.

Overview

It is clear that this post was a major letter service. The link with Adams also led to a sizeable business delivering telegrams. Stait was a great business entrepreneur and created advertising labels which can be found on both telegrams and large commercial mailings. The business created by Stait handled funeral and meeting notices, stockholder reports, letters, some parcels, retail orders, valentines and circulars. The scope of his business and his efficiency made him successful.

Thanks

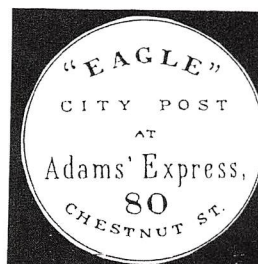
Special thanks to Gordon Stimmell for his research and 1991 article, much of which holds up today. I have placed an asterisk(*) after dates that have been updated by my research.



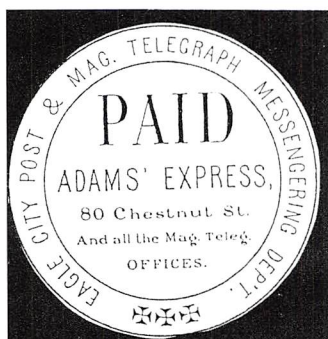
Black/blue unrecorded label
1 example reported



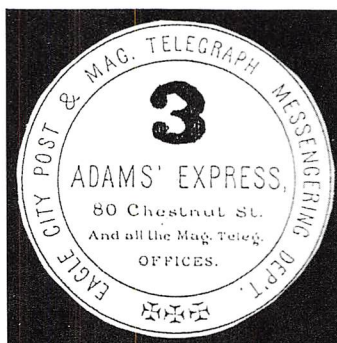
**Type A: July 30, 1845-
October 8, 1846**
About 16 recorded*



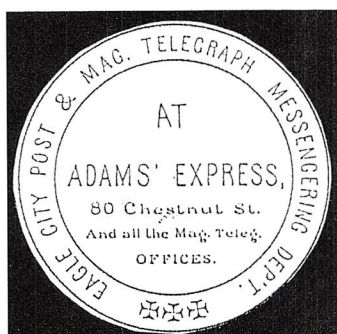
**Type B: February 8, 1846*-
January 14, 1849**
More than 30 recorded*



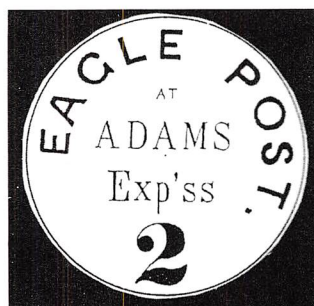
**Type C: February 1, 1849-
July 11, 1849***
13 recorded examples*



**Type D: Probably February
1849.**
6 recorded examples*



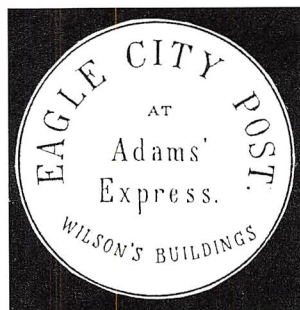
**Type E: January 26, 1848*-
February 1, 1849**
4 recorded examples*



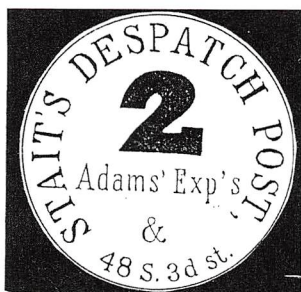
**Type F: March 26, 1849-
September 9, 1850**
13 recorded examples *



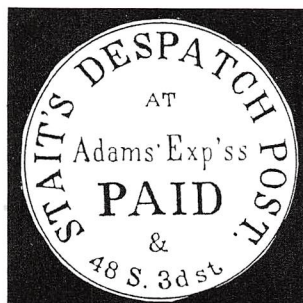
**Type G: February 13, 1849*-
December 15, 1851***
21 recorded examples *



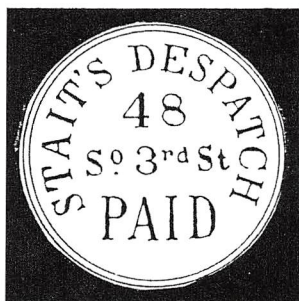
**Type H: November 8, 1850-
December 28, 1850***
3 recorded examples*



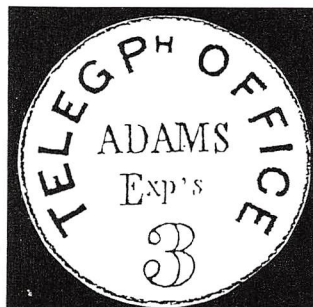
**Type J: June 8, 1850-
October 13, 1851***
13 recorded examples*



**Type K: Late 1849*-
April 10, 1851***
More than 25 examples*

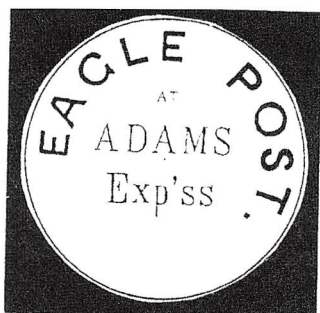


**Type L: March 1850*-
May 1855***
More than 35 recorded*

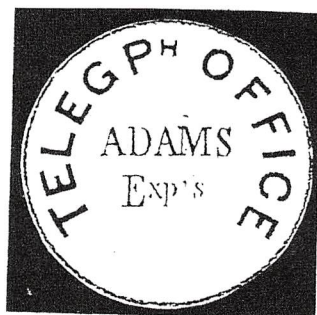


**Type M: March 14, 1849-
May 31, 1850**
4 recorded examples*

Additional Handstamps



**Type F1*: No "2" at bottom⁴
ca. 1849-1850***
3 recorded examples*



**Type M1*: No "3" at bottom
1849***
2 recorded examples*

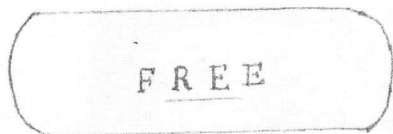
⁴ Richard C. Frajola, Inc. September 14, 1986, Lot 332.



Type N: Red One Cent
ca. 1850*
1 recorded example*



HS-1: Red, large "PAID"
1846*-1850*
16 recorded examples*



HS-2: Red "FREE"
March 1849*
4 recorded examples*



HS-3: Red, small "PAID"
1846*-1850*
5 recorded examples*



HS-4: Red, large "2"
1845-1846*
2 recorded examples*



HS-5: Red "3"
1845*-1849*
14 recorded examples*



HS-6: Red "2"
1845*-1850*
12 recorded examples*



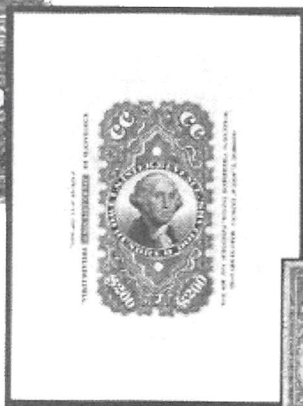
HS-7: Red "5"
1850*
8 recorded examples*

Phenomenal.

Our Website Is Always Changing. Shop Our Auction & Hundreds of Stamps In Full Color!



By the way, you can view our latest giant price list at our site...or send for it by mail. It's free!



U.S. Revenue Stamps

Penny Post readers can relax in the comfort of their home and review one of the world's largest stocks of revenue stamps at our Internet web site. Locals and Carriers are there, too!

But wait, there's more! Our very large web site is one of philately's most exciting. It's full of entertaining full-color graphics and up-to-date information on the revenue stamp world. And it changes all the time...so one visit is never enough.

Scott listed revenues, embossed & stamped paper, beer stamps, taxpaid revenues, possessions revenues, proofs & essays, local stamps, and philatelic literature. America's finest stock. Write, call or visit our site to get our latest price list or send your want list for custom approvals tailored to your needs.

Eric Jackson

P.O. Box 728 · Leesport PA 19533-0728
(610) 926-6200 · Fax: (610) 926-0120

Email: eric@revenueer.com

www.ericjackson.com



When the most valuable collections of
Carriers and Locals are sold,
one firm is chosen again and again.



When David Golden decided on the firm to handle his collection of Carriers and Locals—the largest and most valuable ever sold—he chose Siegel Auction Galleries.

When Richard Schwartz, past president of the Carriers and Locals society, decided to sell his massive collection, he chose the Siegel firm.

And, when the Hall family looked for an auction firm with the ability to sell one of the most important collections of Carriers and Locals ever assembled, they chose the Siegel firm.

Our knowledge, relationships with collectors, and state-of-the-art presentation (print and digital) qualify us above all others to handle collections of Carriers and Locals.

Buying or selling, it makes sense to deal with the leader.

Robert A. Siegel

AUCTION GALLERIES, INC.

www.siegelauctions.com

60 East 56th Street, 4th Floor, New York, NY 10022
Phone (212) 753-6421 Fax (212) 753-6429 E-mail: stamps@siegelauctions.com